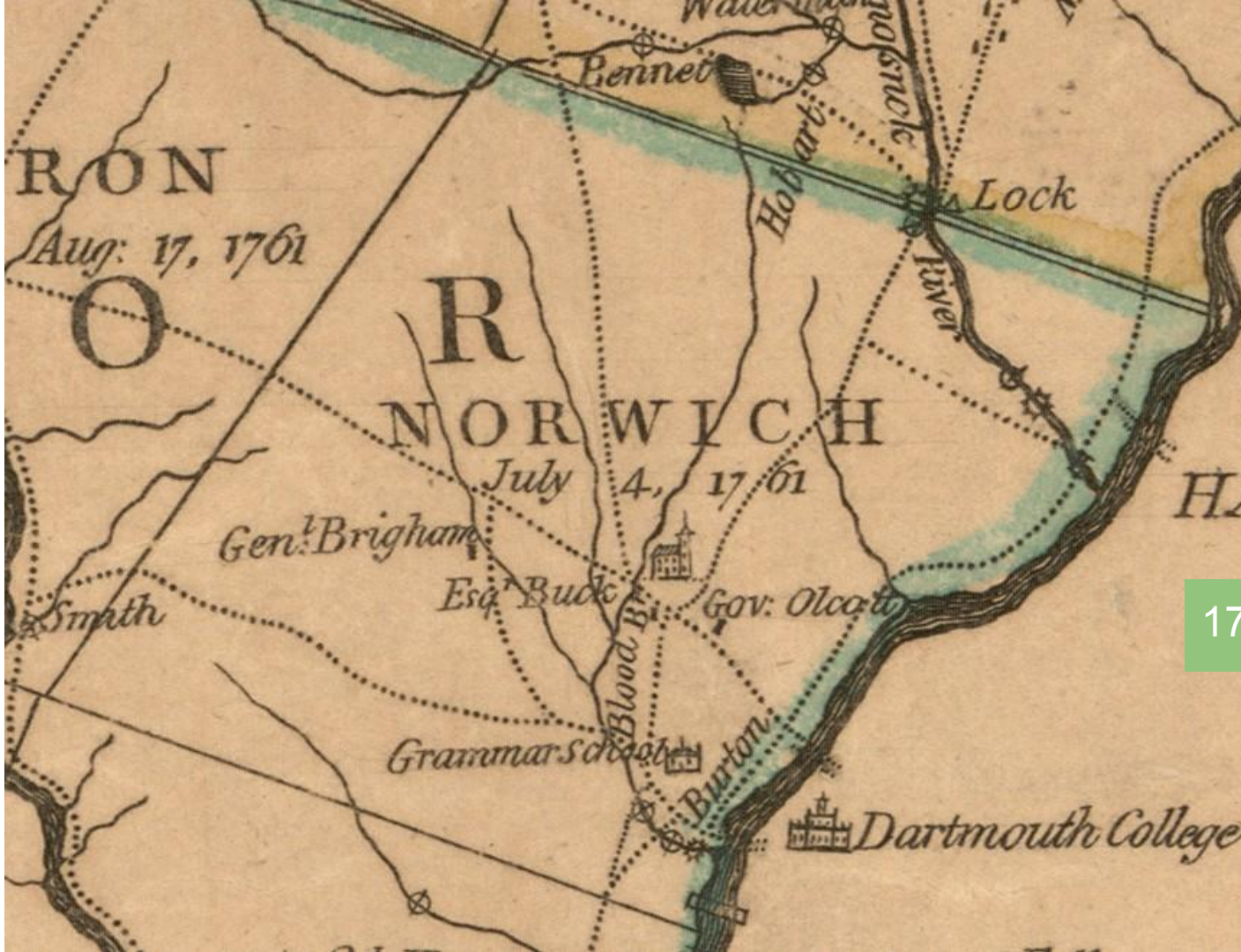


Bemômanosek



Kisosowajpak (Jerusalem Artichokes, or Sunchokes)



1796

Hatch-Peisch House,
built 1773

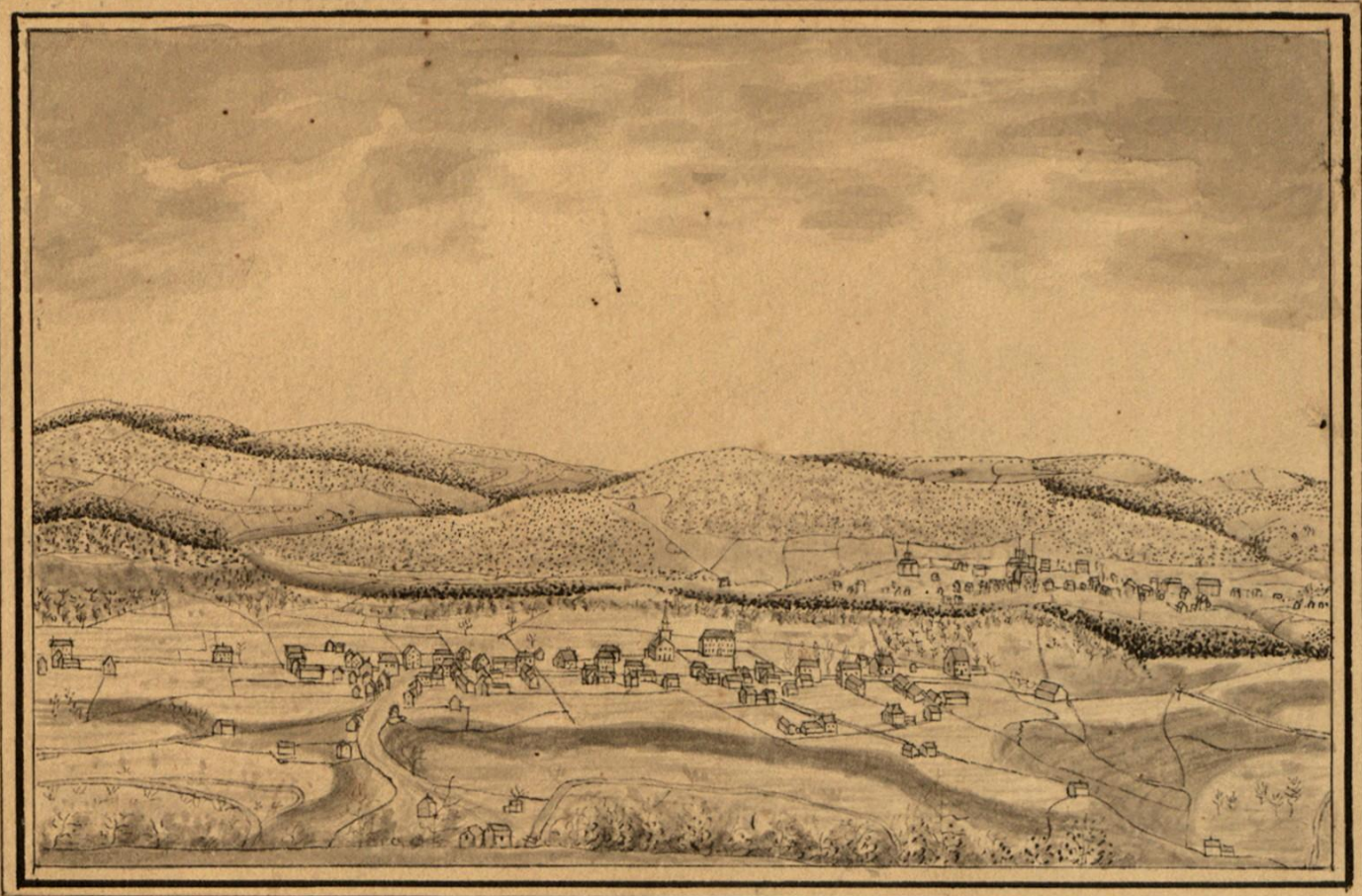


Burton House,
built 1775



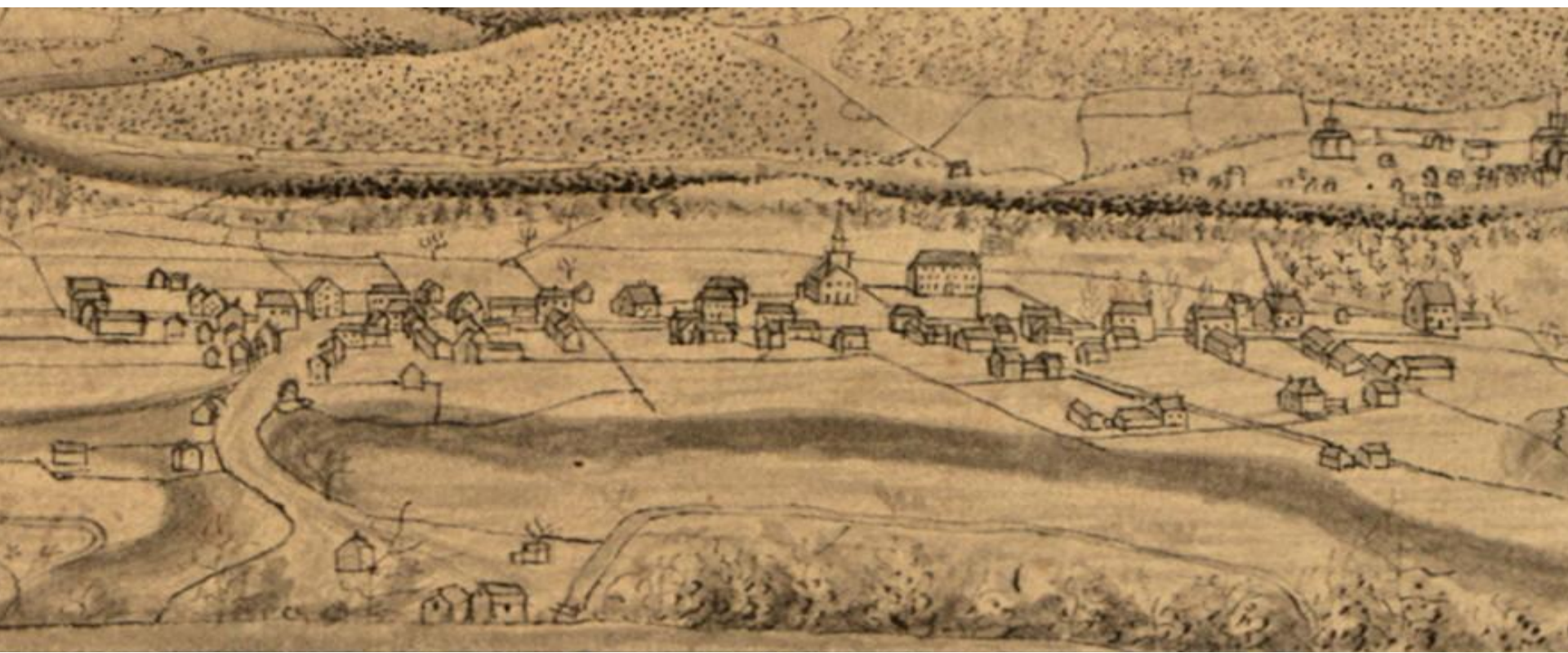
Partridge Snell House,
built 1777



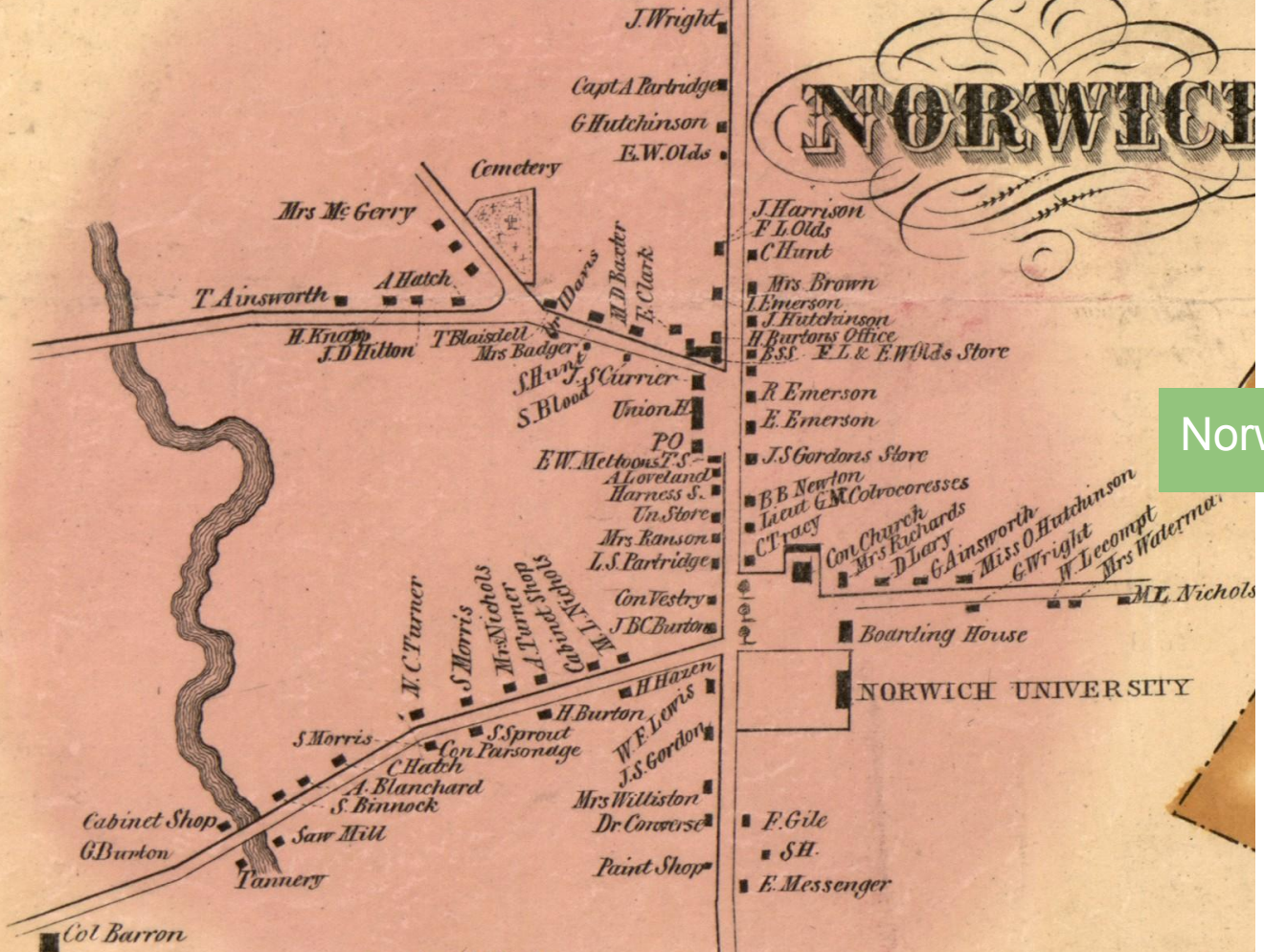


Norwich Village,
ca. 1824

VIEW OF NORWICH FROM PROSPECT HILL.



NORWICH



Norwich Village, 1856

Norwich Village,
before 1889



Norwich Village,
after 1889







Norwich Village, 1959

Turnpike & Huntley Developments



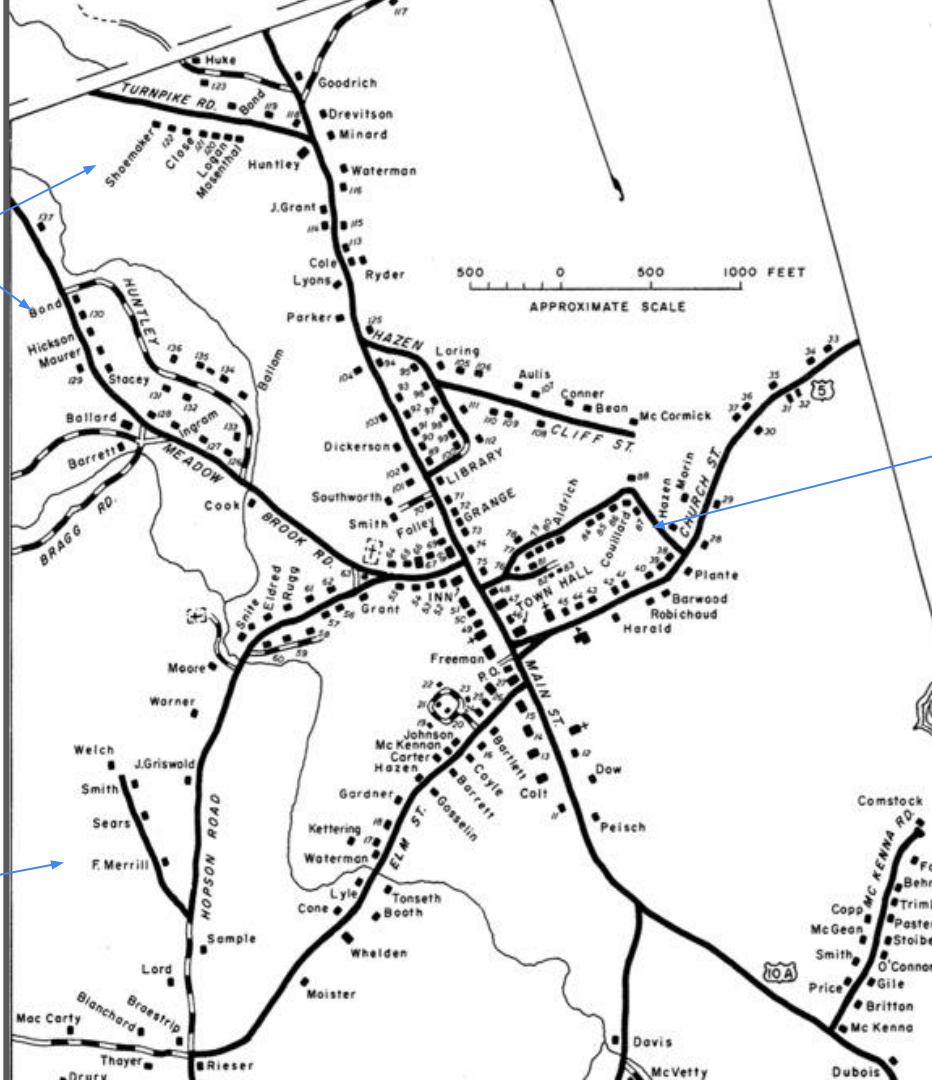
Carpenter Street Development



Hopson/Pine Tree Developments



McKenna Road Development



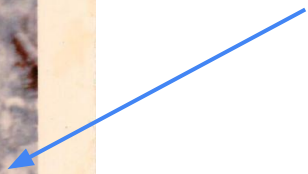




Hazen Barn



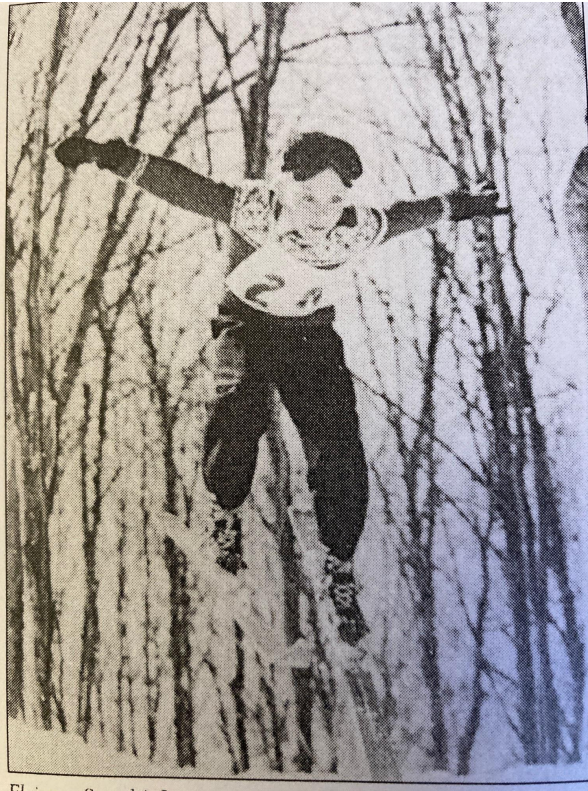
Library



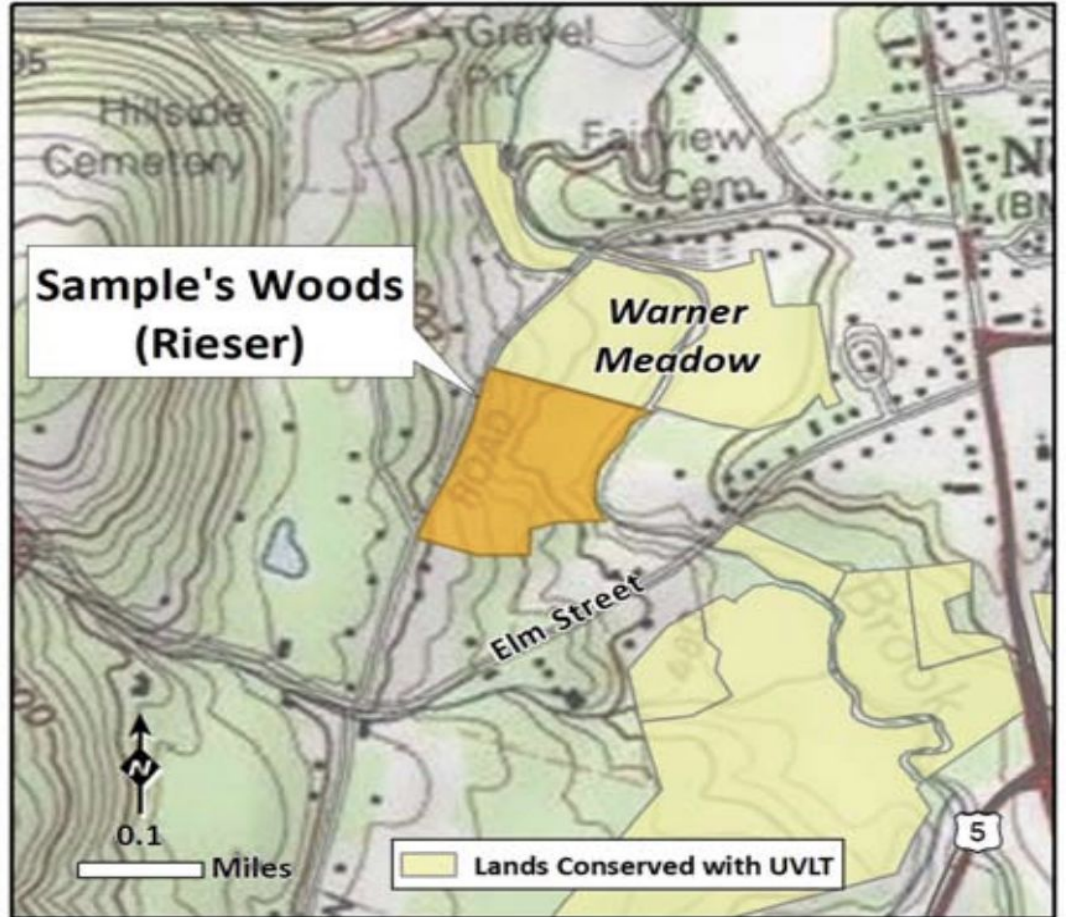


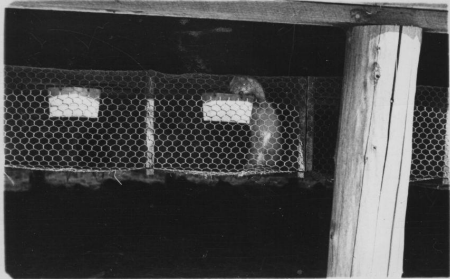
1958-61



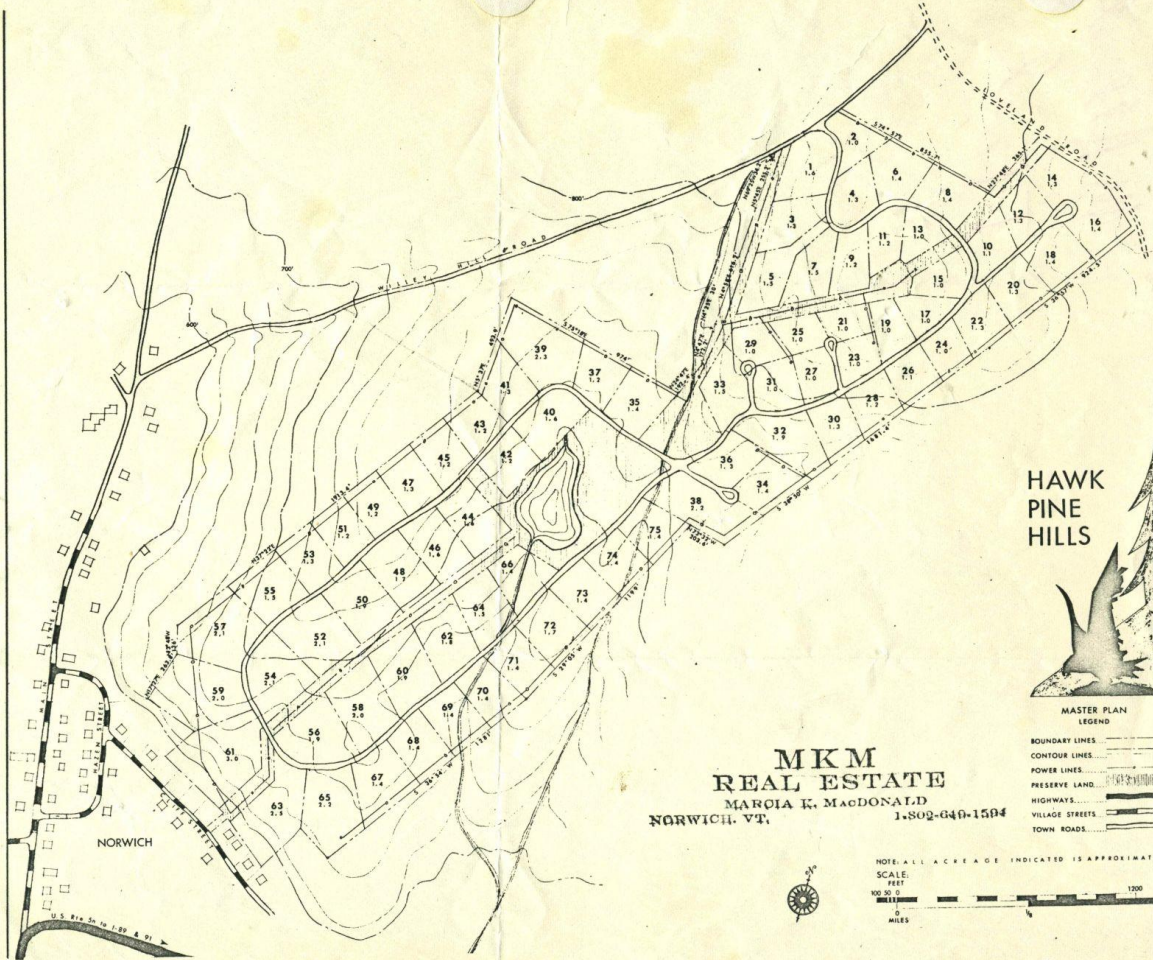


Elmer Sample





Hawk Pine Hills 147.3 Acres
 Roads on Property Approx. 2 miles
 or 12.5 Acres
 50' Right of Way
 Park Area (Preserve) 24.8 Acres
 Total Area of Lots 110.0 Acres



HAWK PINE HILLS



MASTER PLAN LEGEND

- BOUNDARY LINES: ————
- CONTOUR LINES: - - - - -
- POWER LINES: ————
- PRESERVE LAND: [Symbol]
- HIGHWAY: [Symbol]
- VILLAGE STREETS: [Symbol]
- TOWN ROADS: [Symbol]

MKM
REAL ESTATE
 MARGIA K. MACDONALD
 NORWICH, VT. 1.802.640.1504



NOTE: ALL ACREAGE INDICATED IS APPROXIMATE
 SCALE: FEET
 100 200 0
 0 5 1000
 MILES



Norwich Senior Housing















Lewiston
demolished 1967





Valley News, June 17, 1964

Norwichites Protest Highway Interchange

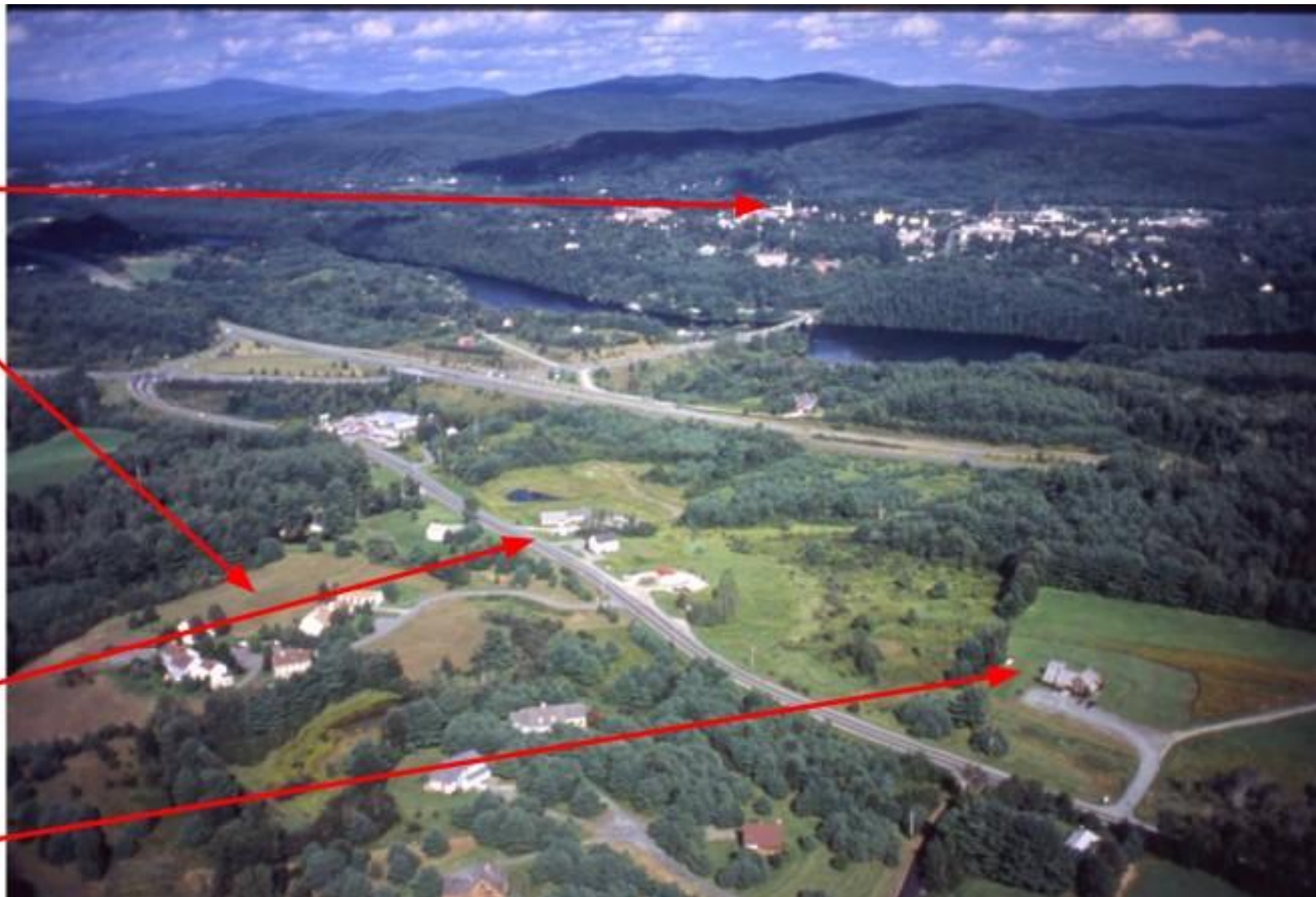
19758

**Baker
Tower**

**Norwich
Meadows**

**King
Arthur
Flour**

**Colton
Center**





Southworth's Garage, 1973

Norwich Farmers' Market



**Killdeer
Farm Stand**



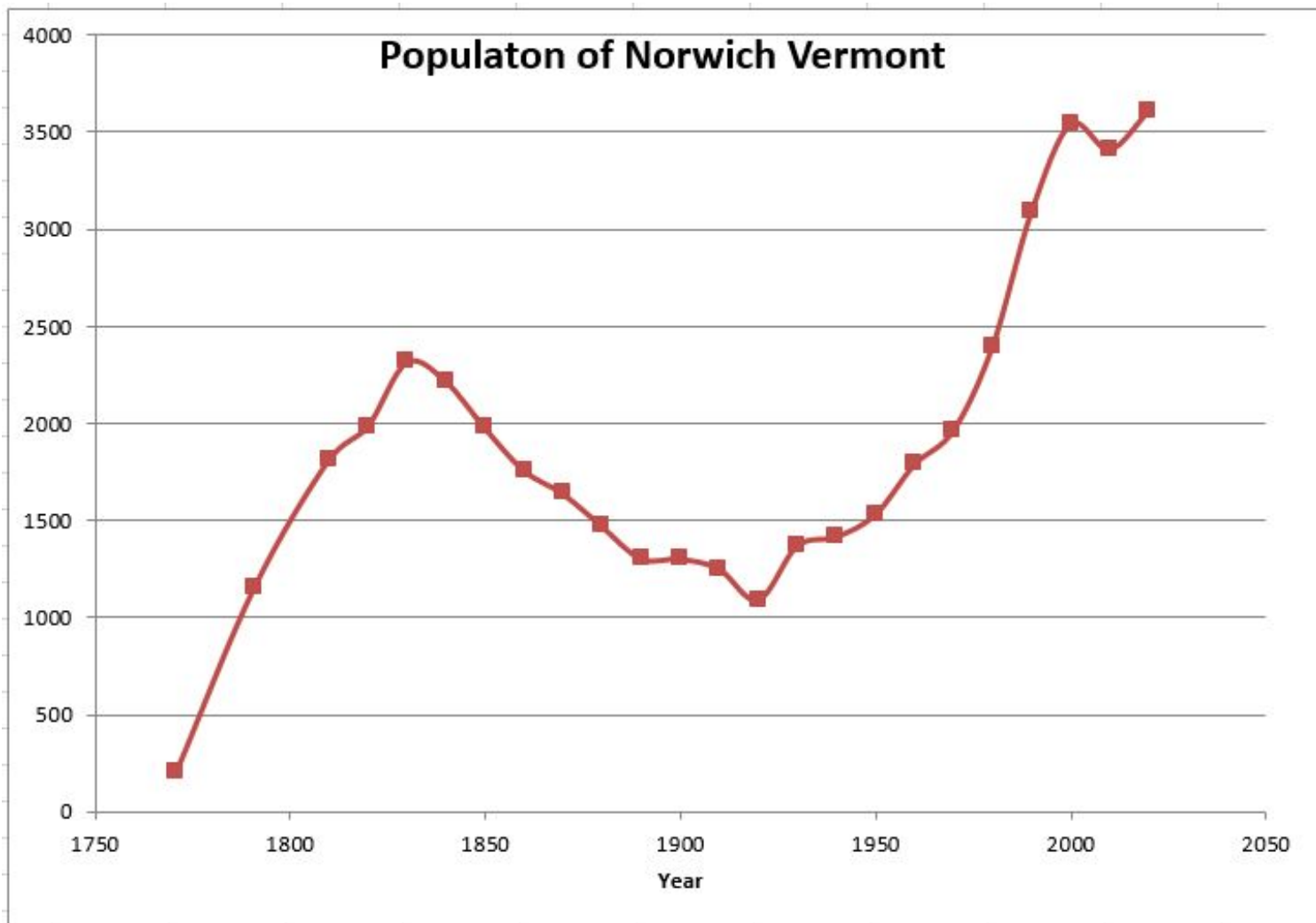






Population of Norwich Vermont

Year	Population
1771	206
1791	1158
1810	1812
1820	1985
1830	2316
1840	2218
1850	1978
1860	1759
1870	1639
1880	1471
1890	1304
1900	1303
1910	1252
1920	1092
1930	1371
1940	1418
1950	1532
1960	1790
1970	1966
1980	2398
1990	3093
2000	3544
2010	3414
2020	3612



National Register

Districts

Brigham Hill Historic District

Goodrich Four Corners Historic District

Jones Circle Historic District

Norwich Mid-Century Modern Historic District

Norwich Village

Buildings

Beaver Meadow Chapel

Beaver Meadow Schoolhouse

Eldridge – Wentworth House

Maple Hill Farm

Meeting House Farm

Mid-Century Modern Residential Architecture MPDF

Root Schoolhouse

Stockmayer House