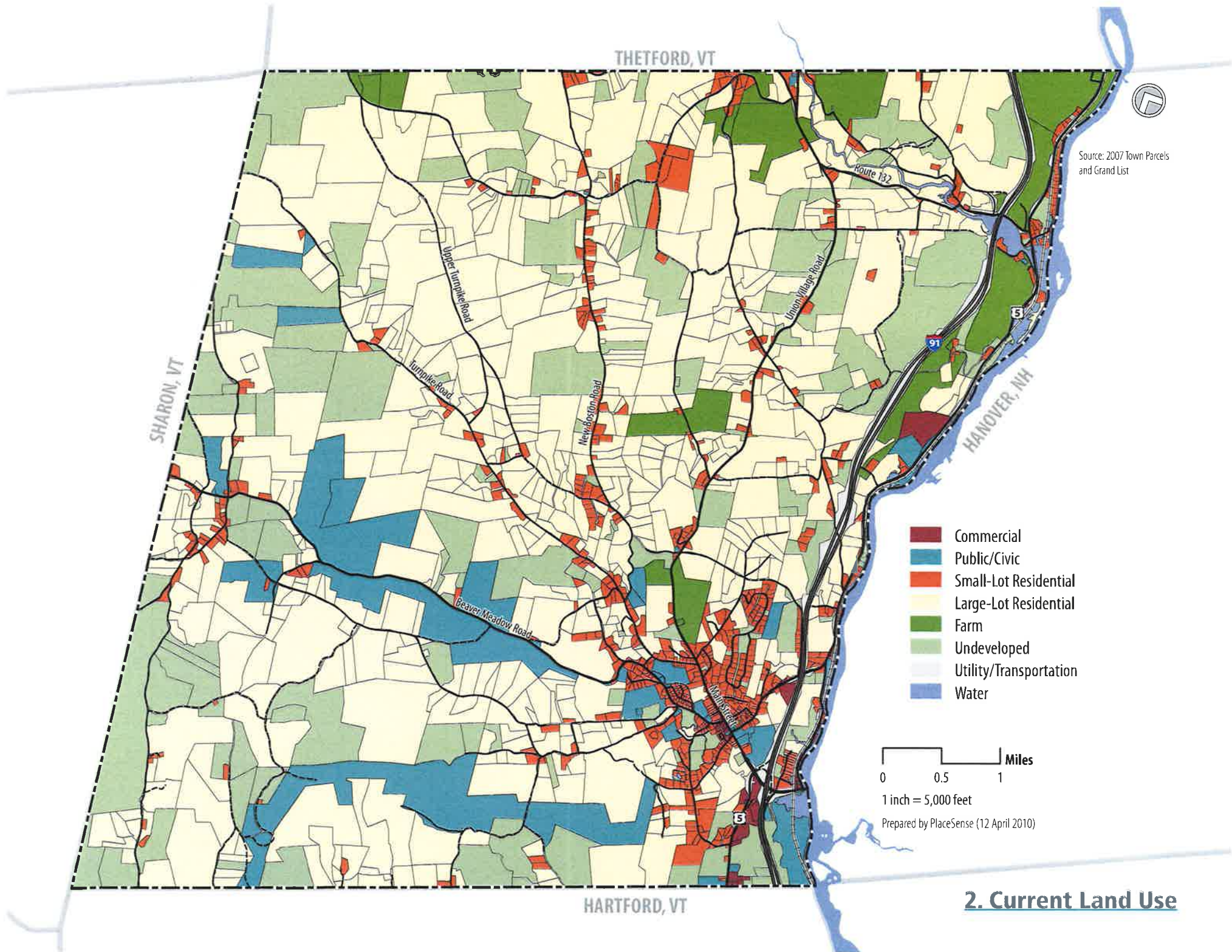


1. Current Land Cover



THETFORD, VT

SHARON, VT

HARTFORD, VT

HANOVER, NH

Source: 2007 Town Parcels and Grand List

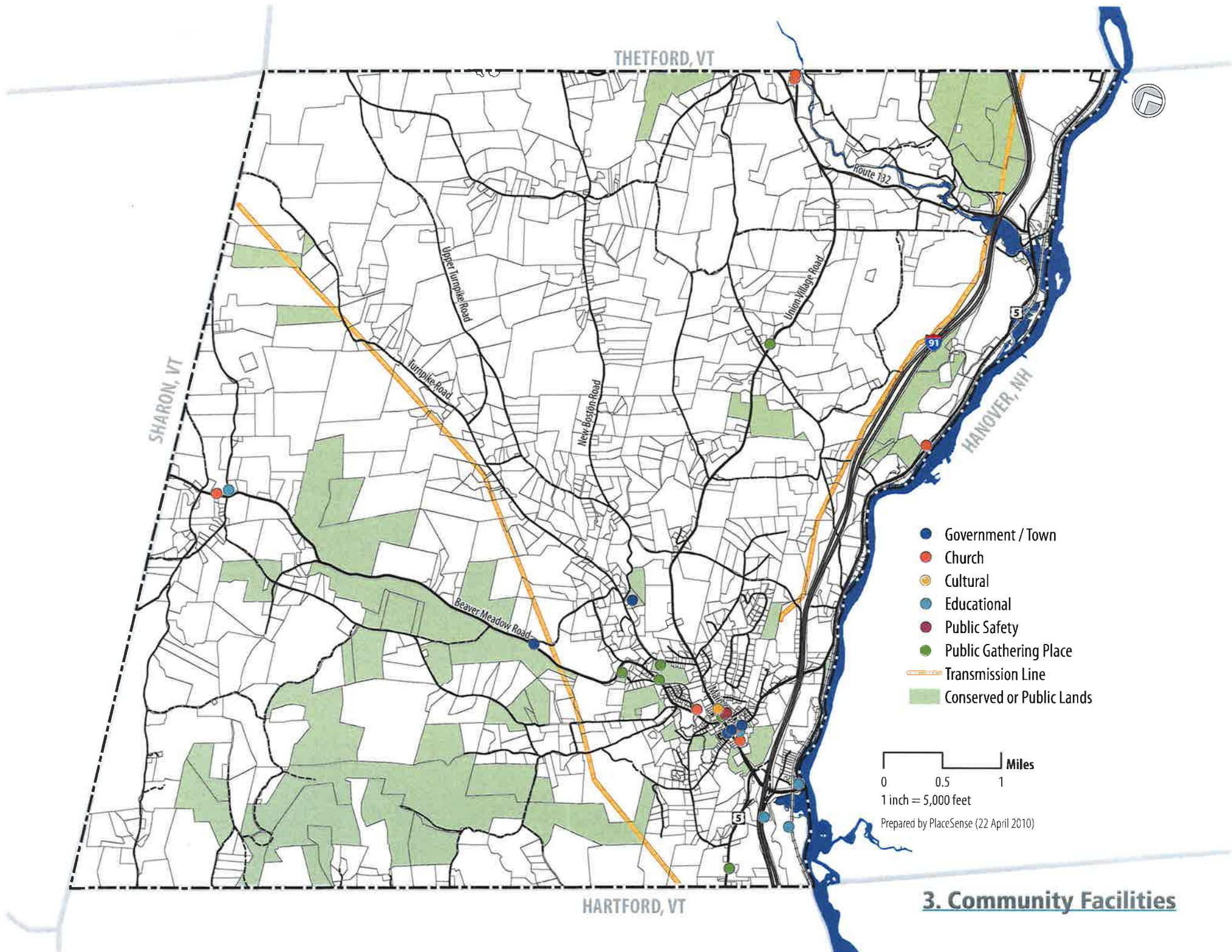
- Commercial
- Public/Civic
- Small-Lot Residential
- Large-Lot Residential
- Farm
- Undeveloped
- Utility/Transportation
- Water

0 0.5 1 Miles

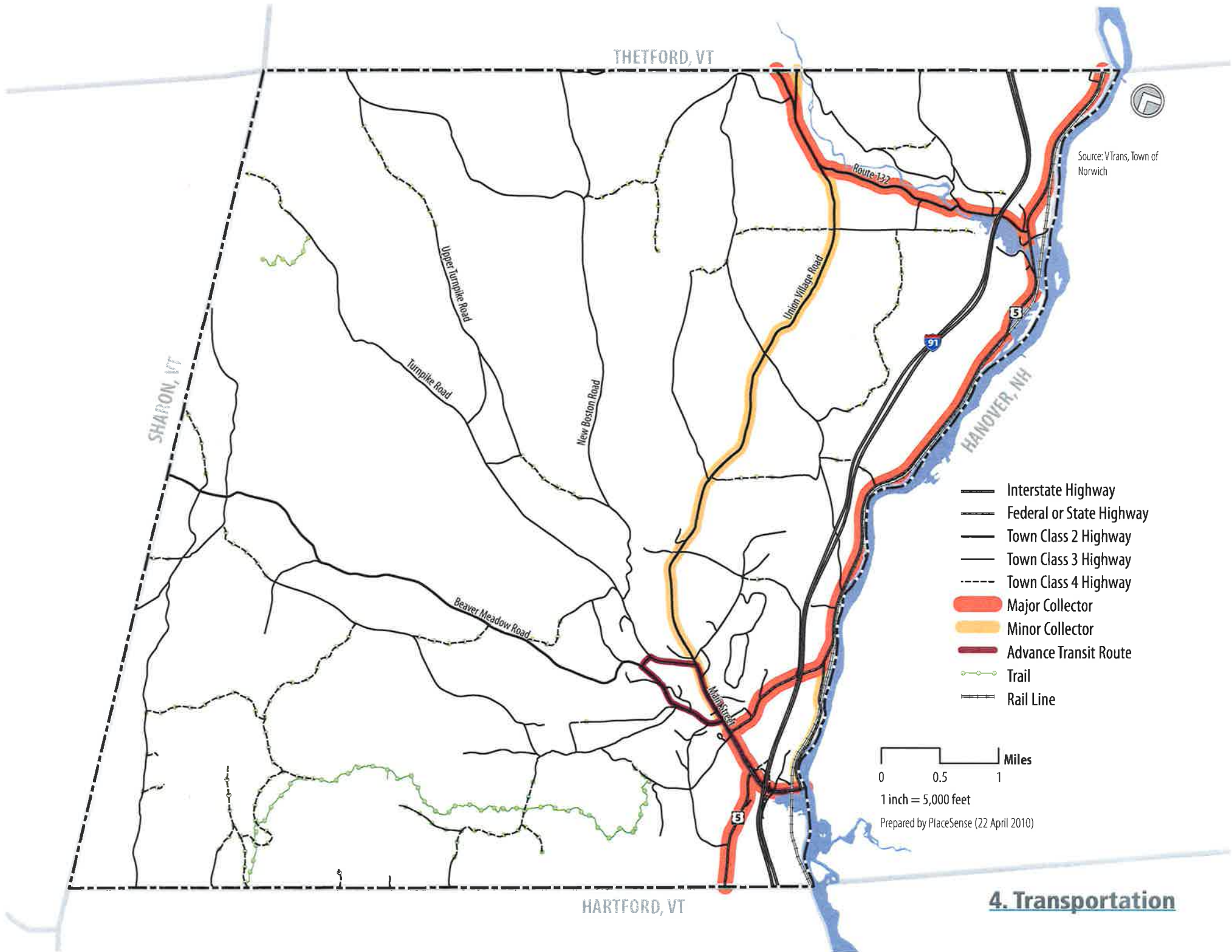
1 inch = 5,000 feet

Prepared by PlaceSense (12 April 2010)

2. Current Land Use



3. Community Facilities



THETFORD, VT

SHARON, VT

HARTFORD, VT

Source: VTrans, Town of Norwich

- Interstate Highway
- Federal or State Highway
- Town Class 2 Highway
- Town Class 3 Highway
- - - Town Class 4 Highway
- Major Collector
- Minor Collector
- Advance Transit Route
- Trail
- Rail Line

0 0.5 1 Miles

1 inch = 5,000 feet

Prepared by PlaceSense (22 April 2010)

4. Transportation

- A. Gile Mountain (1,847 ft)
- B. Griggs Mountain (1,690 ft)
- C. Stone Hill (1,572 ft)
- D. Turkey Hill (1,480 ft)
- E. Moseley Hill (1,237 ft)
- F. Bradley Hill (1,214 ft)
- G. Westinghouse Hill (1,204 ft)
- H. Rowell Hill (1,181 ft)
- I. Sargent Hill (1,175 ft)
- K. Blood Mountain (889 ft)
- J. Flanders Hill (1,1001 ft)

THETFORD, VT

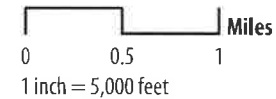
SHARON, VT

HARTFORD, VT

HANOVER, NH

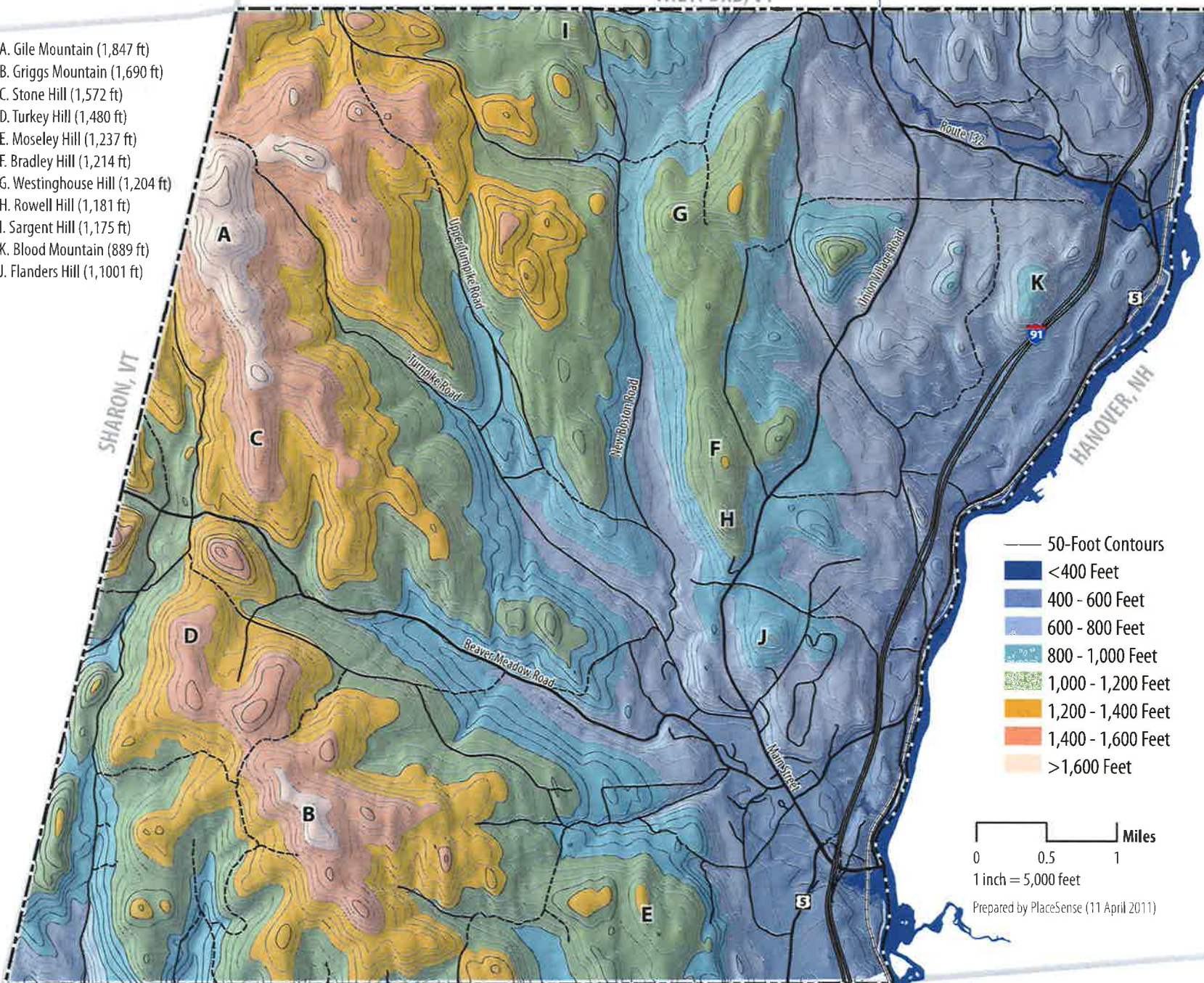
Source: USGS DEM

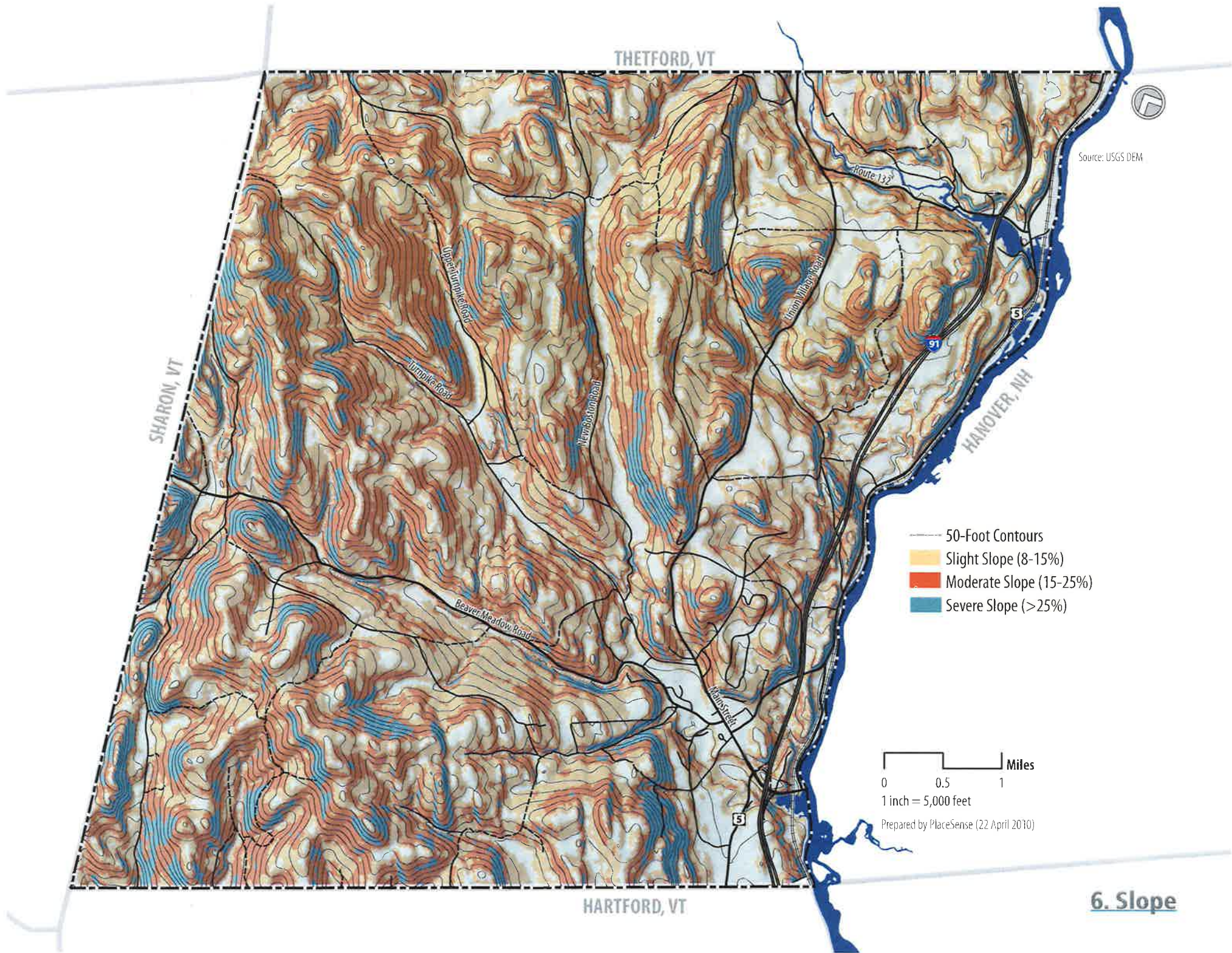
- 50-Foot Contours
- <400 Feet
- 400 - 600 Feet
- 600 - 800 Feet
- 800 - 1,000 Feet
- 1,000 - 1,200 Feet
- 1,200 - 1,400 Feet
- 1,400 - 1,600 Feet
- >1,600 Feet



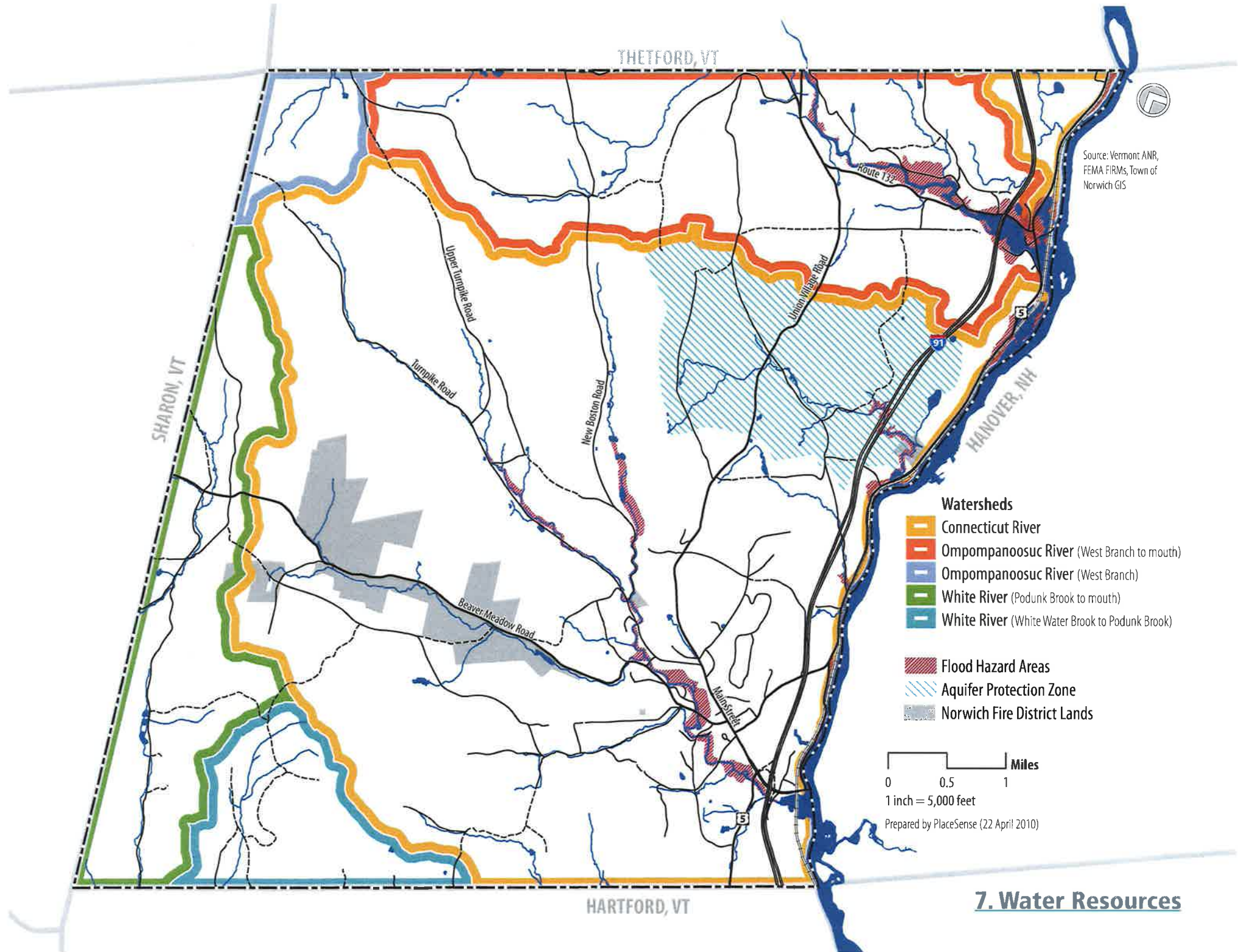
Prepared by PlaceSense (11 April 2011)

5. Elevation

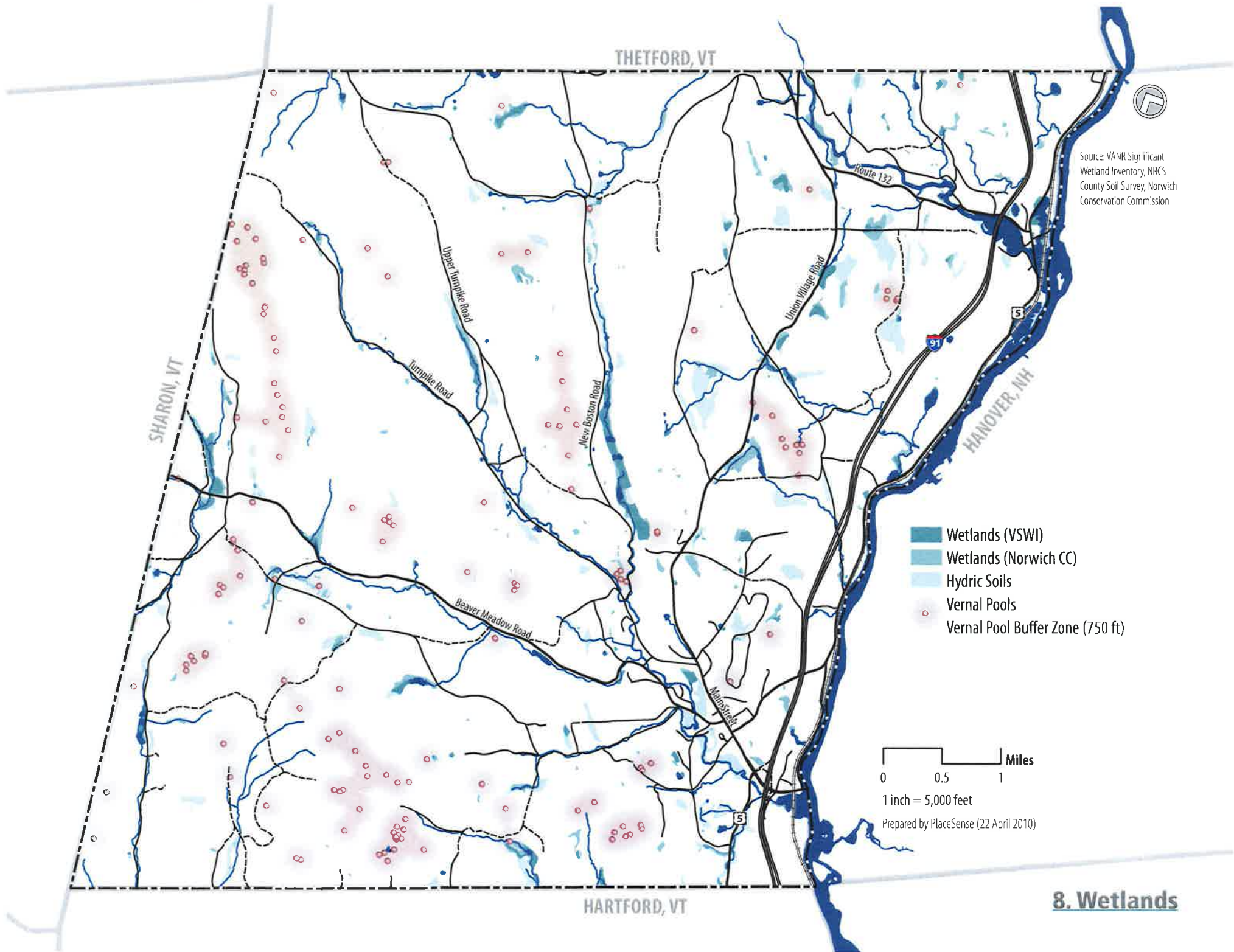




6. Slope



7. Water Resources



THETFORD, VT

SHARON, VT

HARTFORD, VT

HANOVER, NH

Source: VANR Significant Wetland Inventory, NRCS County Soil Survey, Norwich Conservation Commission

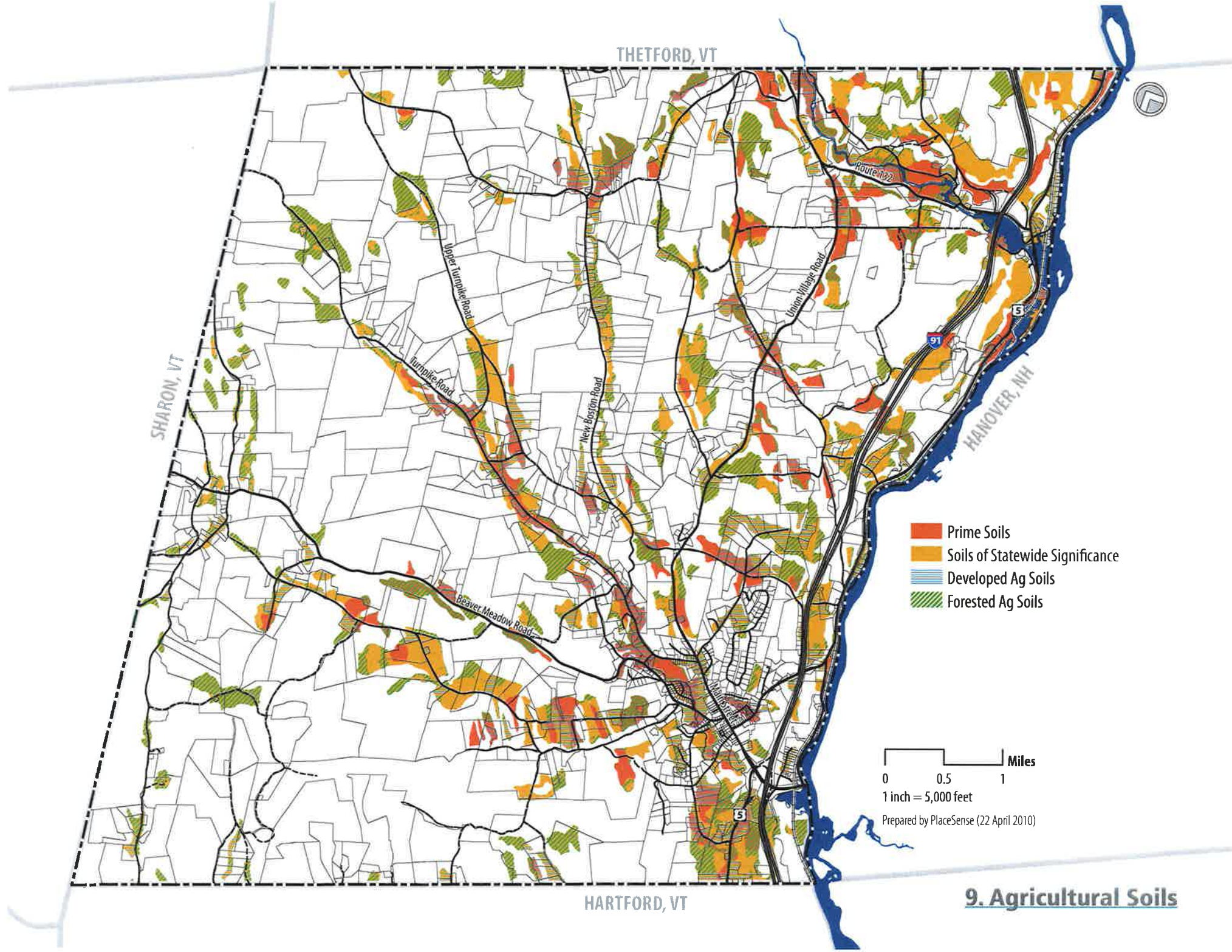
- Wetlands (VSWI)
- Wetlands (Norwich CC)
- Hydric Soils
- Vernal Pools
- Vernal Pool Buffer Zone (750 ft)



1 inch = 5,000 feet

Prepared by PlaceSense (22 April 2010)

8. Wetlands



THETFORD, VT

SHARON, VT

HANOVER, NH

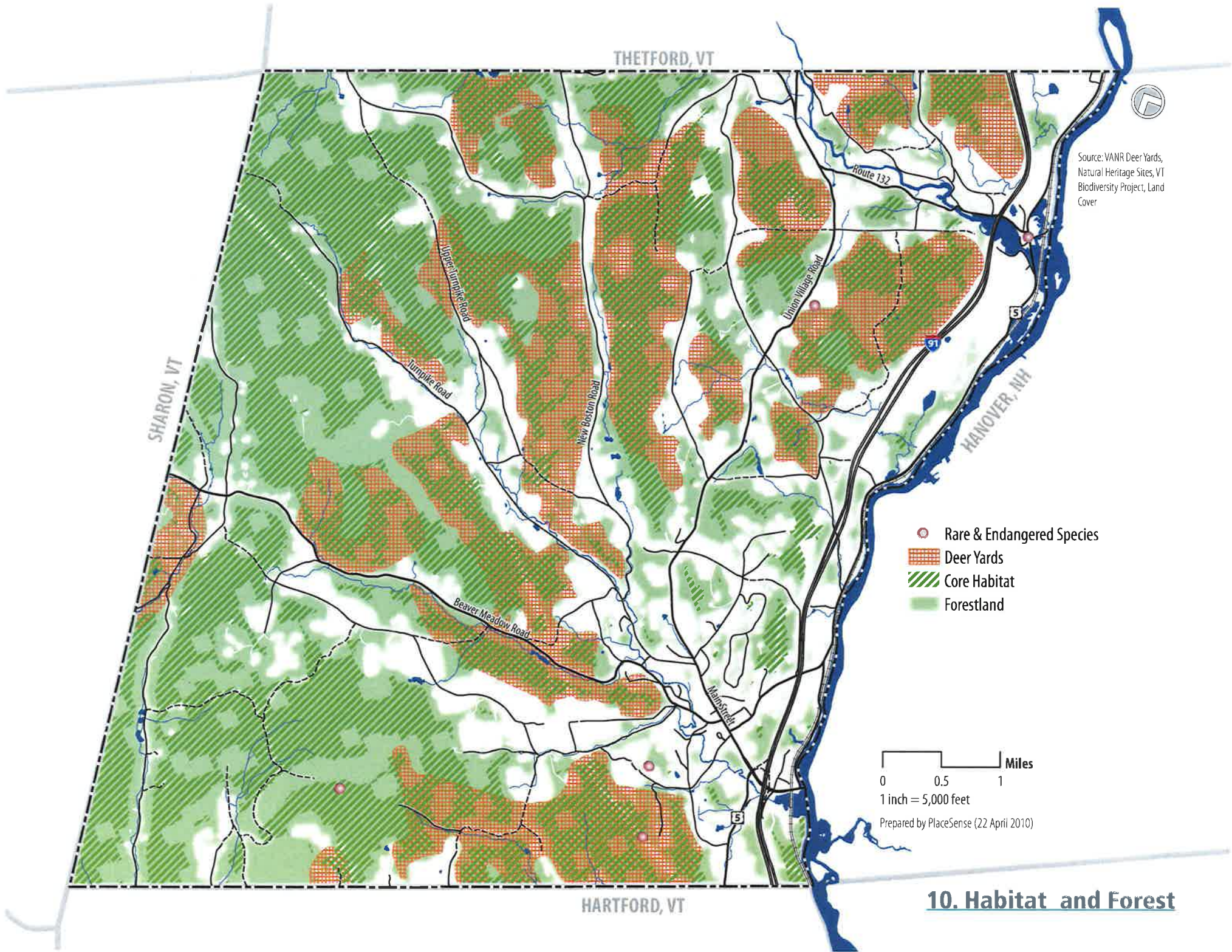
HARTFORD, VT

- Prime Soils
- Soils of Statewide Significance
- Developed Ag Soils
- Forested Ag Soils

0 0.5 1 Miles
 1 inch = 5,000 feet

Prepared by PlaceSense (22 April 2010)

9. Agricultural Soils



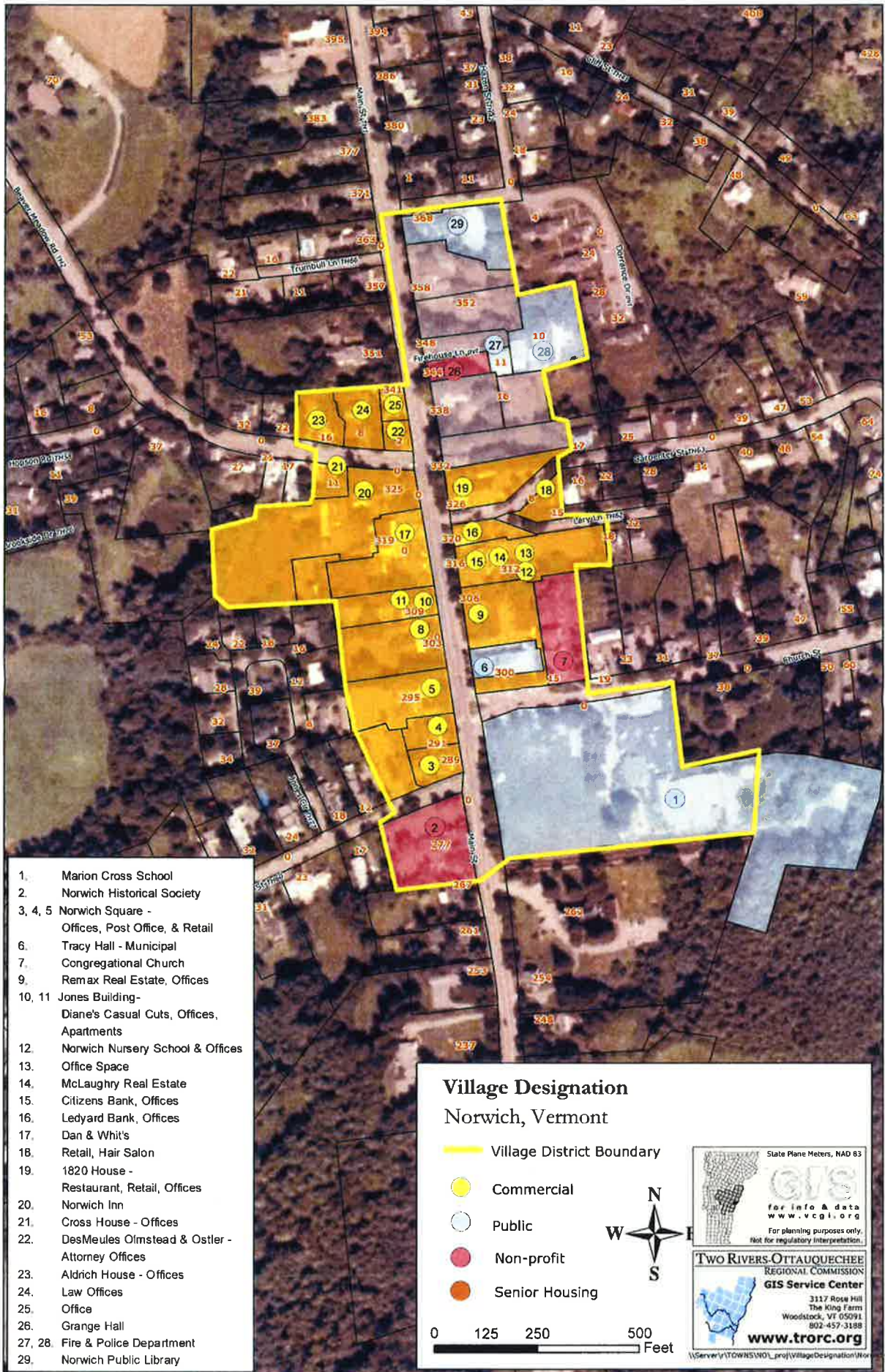
Source: VANR Deer Yards, Natural Heritage Sites, VT Biodiversity Project, Land Cover

- Rare & Endangered Species
- Deer Yards
- Core Habitat
- Forestland

0 0.5 1 Miles
1 inch = 5,000 feet

Prepared by PlaceSense (22 April 2010)

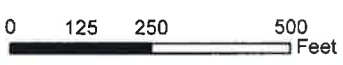
10. Habitat and Forest



1. Marion Cross School
2. Norwich Historical Society
- 3, 4, 5 Norwich Square -
Offices, Post Office, & Retail
6. Tracy Hall - Municipal
7. Congregational Church
9. Remax Real Estate, Offices
- 10, 11 Jones Building -
Diane's Casual Cuts, Offices,
Apartments
12. Norwich Nursery School & Offices
13. Office Space
14. McLaughry Real Estate
15. Citizens Bank, Offices
16. Ledyard Bank, Offices
17. Dan & Whit's
18. Retail, Hair Salon
19. 1820 House -
Restaurant, Retail, Offices
20. Norwich Inn
21. Cross House - Offices
22. DesMeules Olmstead & Ostler -
Attorney Offices
23. Aldrich House - Offices
24. Law Offices
25. Office
26. Grange Hall
- 27, 28. Fire & Police Department
29. Norwich Public Library

Village Designation Norwich, Vermont

- Village District Boundary
- Commercial
- Public
- Non-profit
- Senior Housing



State Plane Meters, NAD 83

GIS
for info & data
www.vcgl.org

For planning purposes only.
Not for regulatory interpretation.

**TWO RIVERS-OTTAUQUECHEE
REGIONAL COMMISSION
GIS Service Center**

3117 Rose Hill
The King Farm
Woodstock, VT 05091
802-457-3188

www.trorc.org