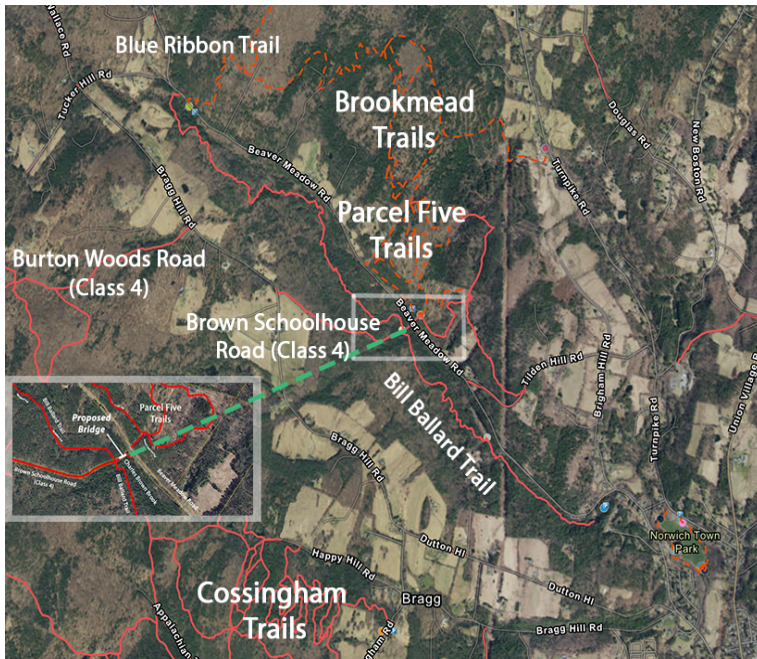


Replacement bridge near Parcel Five

Current status

- Bridge over Charles Brown Brook collapsed in 2018.
- Crossing between trail networks is unsafe.



Proposal

- Applying for \$50-K grant funds against \$80-K total cost for replacement bridge, plus other grants to substantially offset cost.



Replacement bridge near Parcel Five

Collapsed bridge



Bridge collapsed after slow deterioration.

Current condition



Stream unsafe to cross for most users;
no emergency access to Bill Ballard Trail.

Replacement bridge near Parcel Five

Recent view of stream



Conceptual view with bridge



Grants to offset cost

Recreational Trails Program

- Up to \$50,000
- Announcement in April 2020
- Contingent on community support of the bridge replacement

Others

- Seeking at least \$30,000 from other sources
- Make up gap in RTP funding
- Handicap parking
- Esthetic enhancements