

Attachment A Norwich Farmer's Market Solar

301 U.S. Route 5
Norwich, Vermont

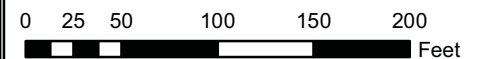


Legend

- Point of Interconnection
- Existing GMP Overhead Line, VCGI
- Solar Array Carports
- Solar Array Canopies
- VHD Streams, VCGI
- VHD Water Bodies, VCGI
- VSWI Class II Wetlands, VCGI
- Deer Wintering Areas, VCGI
- RTE Species, VCGI
- Prime Agricultural Soils, VCGI
- 2 ft Elevation Contours, VCGI
- Property Boundaries, VCGI
- 40 ft Highway Setback
- 25 ft Property Setback

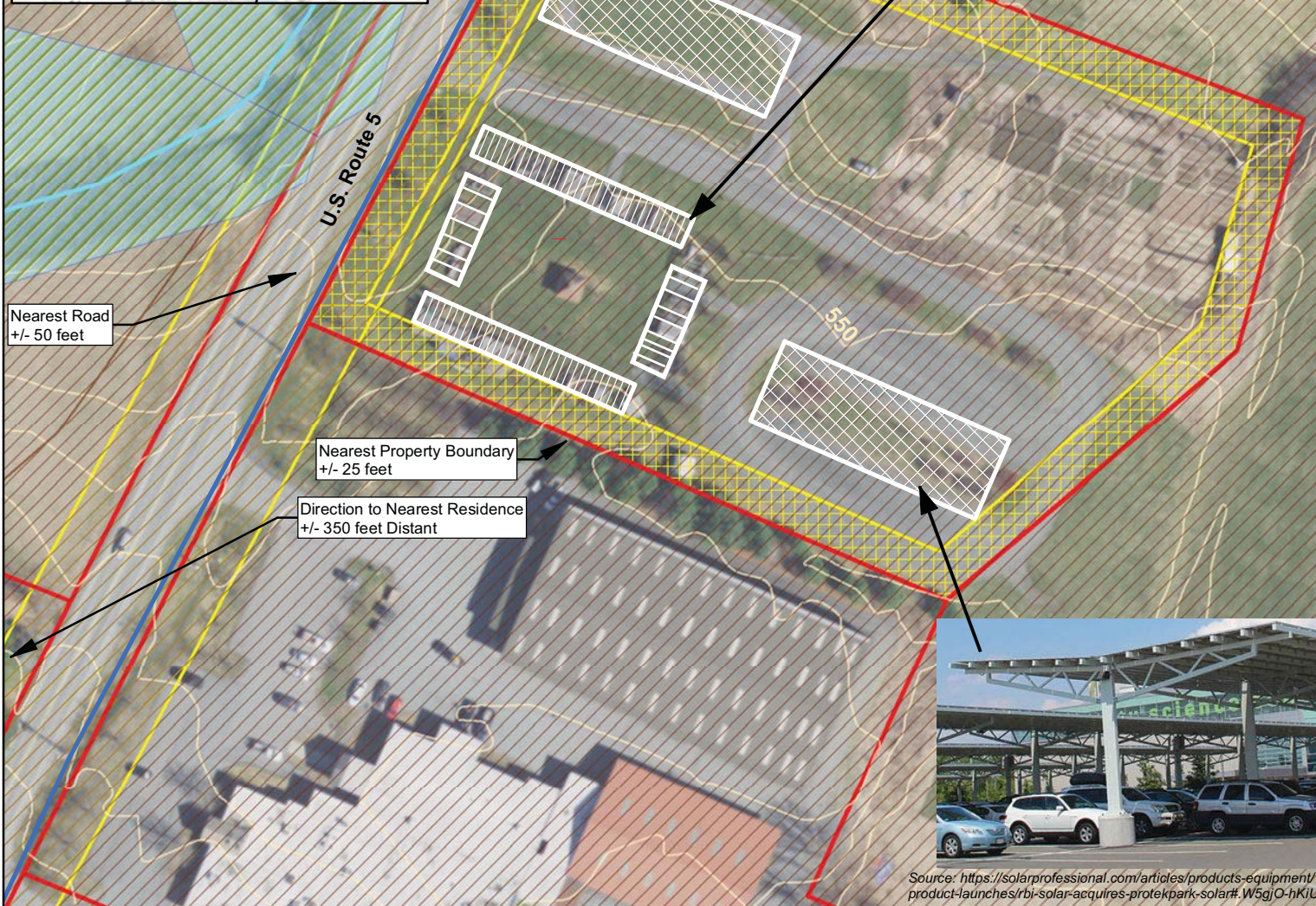
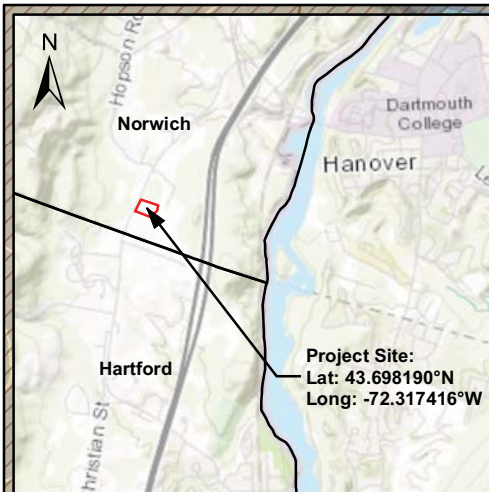
Notes:

1. Canopy sizing for up-to 150 kW.
2. Aspects of this plan are approximate and from aerial imagery.
3. Publicly accessible data are provided by the Vermont Center for Geographic Information (VCGI).
4. The design shown is for the purposes of permitting.



1 inch = 100 feet

Prepared on: 9/11/18 RD



Source: <https://www.houzz.com/photo/3267094-solar-pergola-traditional-patio-philadelphia>



Source: <https://solarprofessional.com/articles/products-equipment/product-launches/rbi-solar-acquires-rotekpark-solar#.W5gjO-hKjUk>