

Town of Norwich Assessors Office

The Town of Norwich has contracted with New England Municipal Consultants, Ltd. to inspect and review property in order to collect and verify building permit and assessment information. The following individual is an employee of New England Municipal Consultants, Ltd.

William Krajeski



Mr. Krajeski is driving the following vehicle:

2012 Honda Pilot - Gray
Massachusetts plate # NEMC

If you have any questions regarding this individual, please call the Assessors' Office at (802) 649-1419 ext 6 or the Norwich Police Department at (802) 649-1460.

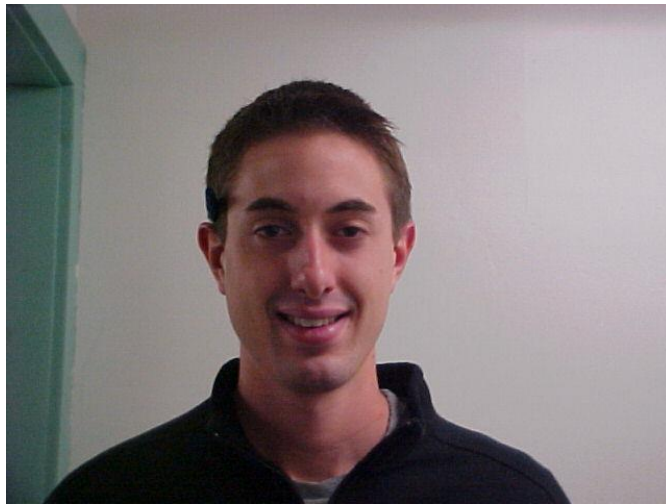
Your cooperation is greatly appreciated.

Assessor's Office
Town of Norwich, Vermont

Town of Norwich Assessors Office

The Town of Norwich has contracted with New England Municipal Consultants, Ltd. to inspect and review property in order to collect and verify building permit and assessment information. The following individual is an employee of New England Municipal Consultants, Ltd.

Matthew Krajeski



Mr. Krajeski is driving the following vehicle:

2016 Black Subaru Crosstrek
VT Plate NEMC2

If you have any questions regarding this individual, please call the Assessors' Office at (802) 649-1419 ext 6 or the Norwich Police Department at (802) 649-1460.

Your cooperation is greatly appreciated.

Assessor's Office
Town of Norwich, Vermont

Town of Norwich Assessors Office

The Town of Norwich has contracted with New England Municipal Consultants, Ltd. to inspect and review property in order to collect and verify building permit and assessment information. The following individual is an employee of New England Municipal Consultants, Ltd.

Ryan Silvestri



Mr. Silvestri is driving the following vehicle:

2015 Green GMC Sierra
VT plate # 249A805

If you have any questions regarding this individual, please call the Assessors' Office at (802) 649-1419 ext 6 or the Norwich Police Department at (802) 649-1460.

Your cooperation is greatly appreciated.

Assessor's Office
Town of Norwich, Vermont