

First Floor Plan

Norwich Fire and Police Facility



North Scale 1/16"=1'-0"

10/31/14



Second Floor Plan

Norwich Fire and Police Facility



North Scale: 1/16"=1'-0"

10/31/14



North Exterior Elevation
Norwich Fire and Police Facility

Scale 1/8"=1-0'
10/31/14



East Exterior Elevation
Norwich Fire and Police Facility

Scale 1/8"=1'-0
10/31/14



West Exterior Elevation
Norwich Fire and Police Facility

Scale 1/8"=1'-0
10/31/14





North

| Program Spaces | Existing | | Proposed | | Schematic Design | | Common Practice | | Adjacencies | Interior Floor Finishes | Notes |
|----------------------------------|----------|----|----------|----|------------------|----|-----------------|----|-----------------------------|-------------------------|--|
| a. Vestibule | 0 | sf | 100 | sf | 0 | sf | 100 | sf | | Porcelain Tile | Shared space with Fire |
| b. Lobby | 84 | sf | 150 | sf | 0 | sf | 150 | sf | | Porcelain Tile | Shared space with Fire |
| c. Administrative Office | 208 | sf | 150 | sf | 136 | sf | 150 | sf | Lobby | Carpet | This is a separate office, includes files, copier, dispatch radio, and transaction window. |
| d. Chief's Office | 208 | sf | 180 | sf | 189 | sf | 160 | sf | Lobby | Carpet | Space for a small table and chairs. |
| e. Dispatch/Recpetion | 0 | sf | 0 | sf | 0 | sf | 120 | sf | | | |
| f. PD Supervisor Office | 144 | sf | 150 | sf | 192 | sf | 150 | sf | Chief's Office | Carpet | Future Investigative Officer or Sergeant. |
| g. PD Shared Office for Officers | 115 | sf | 250 | sf | 229 | sf | 300 | sf | Chief's Office | Carpet | Area for four workstations, report writing. |
| h. Training Room (EOC) | 370 | sf | 0 | sf | 409 | sf | 500 | sf | | | |
| h. Small Conference Room | 370 | sf | 0 | sf | 189 | sf | 200 | sf | | | |
| i. Report Writing | 135 | sf | 0 | sf | 0 | sf | 0 | sf | | Carpet | To be in PD shared office for officers |
| j. Interview * (x2) | 0 | sf | 100 | sf | 218 | sf | 200 | sf | | VCT | * Separate suspect and victim/witness rooms for security & privacy |
| l. Public Toilets | 47 | sf | 68 | sf | 56 | sf | 68 | sf | Lobby, Training Room | Ceramic Tile | Uni-Sex ADA restroom |
| m. Processing/Booking | 0 | sf | 0 | sf | 0 | sf | 250 | sf | | | Future |
| n. Holding Cell * (x2) | 0 | sf | 0 | sf | 0 | sf | 150 | sf | | | * Usually (2) cells minimum |
| o. Sally Port | 0 | sf | 0 | sf | 0 | sf | 350 | sf | | | Future |
| q. Carport (Secure Garage) | 0 | sf | 350 | sf | 431 | sf | 350 | sf | | | For the duty officer's patrol vehicle. |
| p. Evidence Processing | 0 | sf | 50 | sf | 61 | sf | 80 | sf | Processing | VCT | Will also serve as Armory with SS table |
| q. Evidence Storage | 35 | sf | 100 | sf | 123 | sf | 150 | sf | Evidence Processing | VCT | |
| r. Archived Storage | 0 | sf | 100 | sf | 66 | sf | 200 | sf | | VCT | Required for records storage |
| s. Break Room | 120 | sf | 120 | sf | 166 | sf | 150 | sf | Chief's Office, PD Offices | VCT | Includes micro, sink, and ref serving 4 people. |
| u. Men's Locker Room | 98 | sf | 195 | sf | 211 | sf | 250 | sf | Fitness Room, PD Offices | Ceramic Tile | Includes 6 lockers, restroom, and shower. |
| v. Women's Locker Room | 98 | sf | 144 | sf | 204 | sf | 150 | sf | | Ceramic Tile | Includes 2 lockers, restroom, and shower. |
| w. General Storage | 250 | sf | 100 | sf | 140 | sf | 200 | sf | | VCT | |
| x. Mechanical Room | 0 | sf | 195 | sf | 0 | sf | 200 | sf | Includes Electric Equipment | Concrete | |
| z. Janitor Closet | 0 | sf | 50 | sf | 0 | sf | 70 | sf | | VCT | |
| aa. I.T. Closet | 0 | sf | 0 | sf | 0 | sf | 80 | sf | | VCT | Contained within Mechanical Room |
| | | | | | | | | | | | |

| | | | | | | | | |
|----------------------------|-------|----|-------|----|-------|----|-------|----|
| Total Net Square Footage | 2,282 | sf | 2,552 | sf | 3,020 | sf | 4,728 | sf |
| (net/gross %) | 0% | | 10% | | 24% | | 10% | |
| TOTAL GROSS SQUARE FOOTAGE | 2,282 | sf | 2,807 | sf | 3,962 | sf | 5,201 | sf |

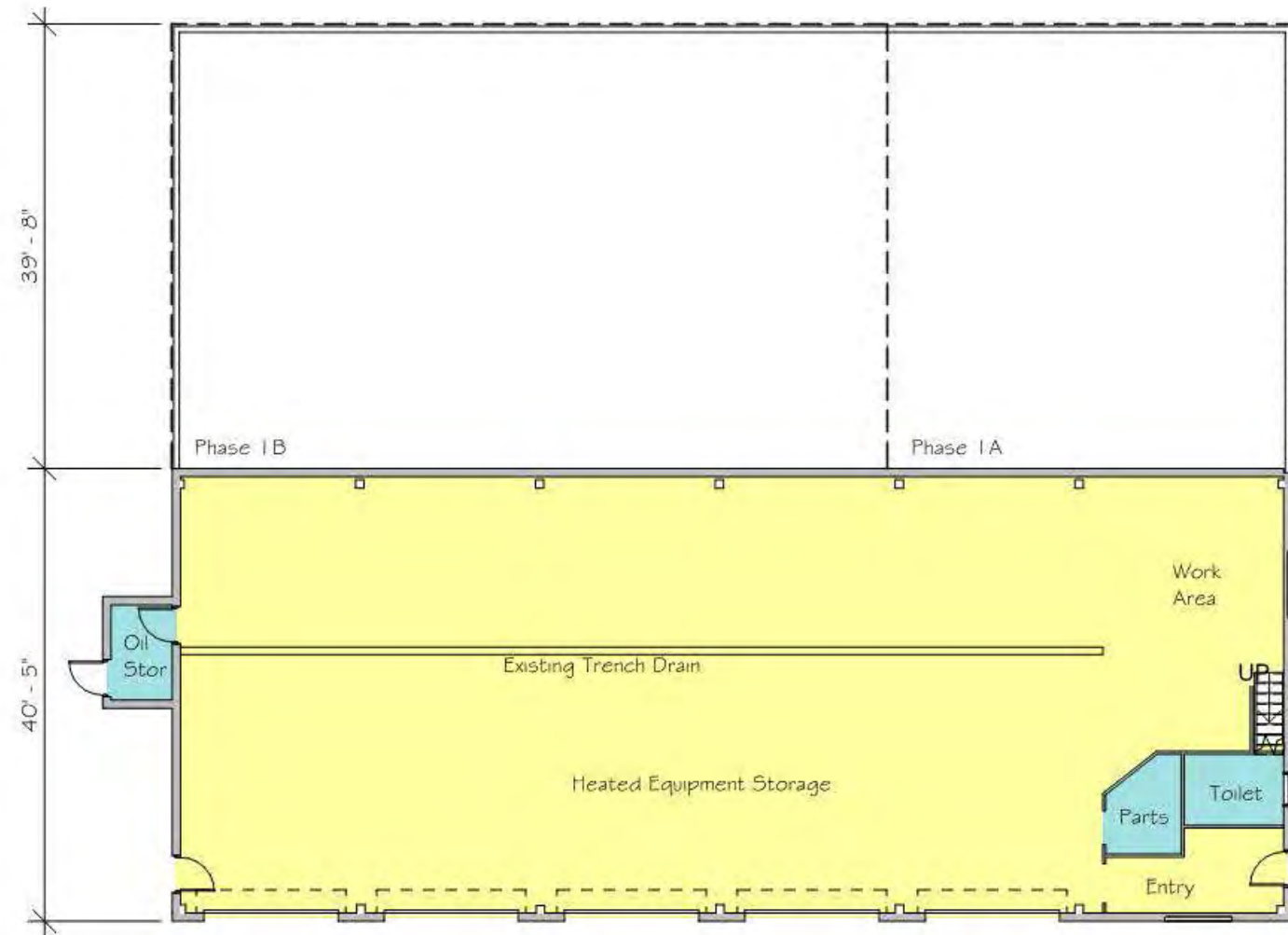
NOTES:
Existing Fire Chief's office located in existing Police Station and the area is captured within the net/gross ratio.

250 sf
2,557 sf

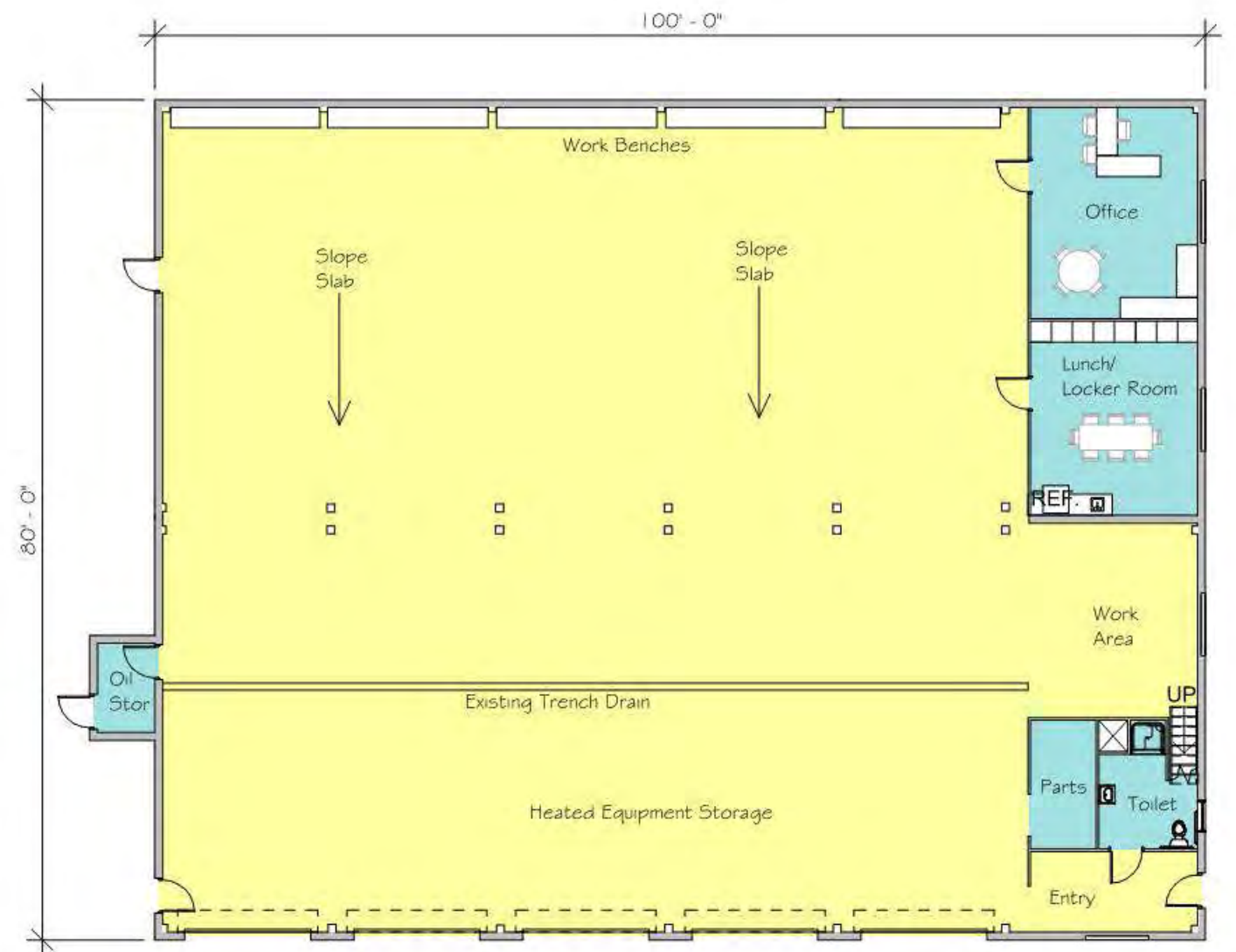
Potential shared spaces with Fire including grossing factor.
Total Police if shared spaces with Fire.

| Program Spaces | Existing | | Proposed | | Schematic Design 10.31.14 | Common Practice | Adjacencies | Interior Floor Finishes | Notes |
|-------------------------------|----------|----|----------|----|------------------------------|--------------------|--|--------------------------|--|
| a. Vestibule | 0 | sf | 100 | sf | 124 | sf | Other admin spaces | Porcelain Tile | Shared space with Police. |
| b. Lobby | 0 | sf | 300 | sf | 0 | sf | Other admin spaces | Porcelain Tile | Shared space with Police. |
| c. Chief's Office | 0 | sf | 180 | sf | 195 | sf | Other admin spaces. Apparatus floor. | VCT | To include space for a small table and chairs. |
| d. FD Office | 110 | sf | 100 | sf | 174 | sf | Other admin spaces. Apparatus floor. | VCT | |
| e. Training Room | 616 | sf | 670 | sf | 686 | sf | Other admin spaces | Carpet | Shared space with Police. Direct access for public use. Includes Storage |
| f. Meeting Room/ Library | 0 | sf | 200 | sf | 201 | sf | Adj to Chief's Office | Carpet | For seating up to 8. |
| g. Dispatch | 0 | sf | 0 | sf | 0 | sf | | | Future? |
| h. Public Toilet | 30 | sf | 68 | sf | 56 | sf | Other admin spaces | Ceramic Tile | |
| i. Apparatus Bays | 3,250 | sf | 4,488 | sf | 4474 | sf | Includes SCBA, Turnout Gear, Hose Storage | Sealed Concrete or Epoxy | Four Bays @ 17' O.C. with 14'x14' OH doors. |
| j. Uni-Sex Bathroom w/ Shower | 0 | sf | 121 | sf | 58 | sf | Apparatus Bays | VCT | Private bathroom for department use at Apparatus Bay |
| k. Gear Laundry | 0 | sf | 0 | sf | 0 | sf | Apparatus Bays | Concrete | Contained within Apparatus Bay. |
| l. Technical Rescue Storage | 0 | sf | 0 | sf | 0 | sf | Apparatus Bays | Concrete | Contained within Apparatus Bay. |
| m. Hazmat Equipment Storage | 0 | sf | 0 | sf | 0 | sf | Apparatus Bays | Concrete | Contained within Apparatus Bay. |
| n. EMS Secure Storage | 0 | sf | 0 | sf | 0 | sf | Apparatus Bays | Concrete | Contained within Apparatus Bay. |
| o. Day Room and Kitchen | 0 | sf | 300 | sf | 281 | sf | | VCT | |
| p. Dorm Rooms | 0 | sf | 0 | sf | 0 | sf | | Carpet | |
| q. Fitness Room | 0 | sf | 0 | sf | 0 | sf | | | Future? |
| r. Men's Locker Room | 0 | sf | 0 | sf | 0 | sf | | | Future? |
| s. Women's Locker Room | 0 | sf | 0 | sf | 0 | sf | | | Future? |
| t. Mechanical Room | 90 | sf | 200 | sf | 272 | sf | Includes Electrical Equipment and Compressor | Concrete | Shared with Police, Includes Elevator Machine Room |
| u. Shop/Tool Room | 0 | sf | 250 | sf | 373 | sf | Apparatus Bays | Sealed Concrete or Epoxy | |
| v. Janitor Closet | 0 | sf | 80 | sf | 60 | sf | | VCT | |
| w. I.T. Closet | 0 | sf | 70 | sf | 0 | sf | | VCT | In Mechanical Room |
| x. General Storage | 0 | sf | 300 | sf | 128 | sf | | VCT | Could be one space or multiple. |
| | | | | | | | | | |

| | | | | | | | | | |
|----------------------------|-------|----|-------|----|-------|----|--------|----|---|
| Total Net Square Footage | 4,096 | sf | 7,427 | sf | 7,082 | sf | 9,238 | sf | NOTES: Existing Chief's Office located in existing Police Station. |
| (net/gross %) | 0% | | 10% | | 24% | | 10% | | |
| TOTAL GROSS SQUARE FOOTAGE | 4,096 | sf | 8,170 | sf | 9,292 | sf | 10,162 | sf | |

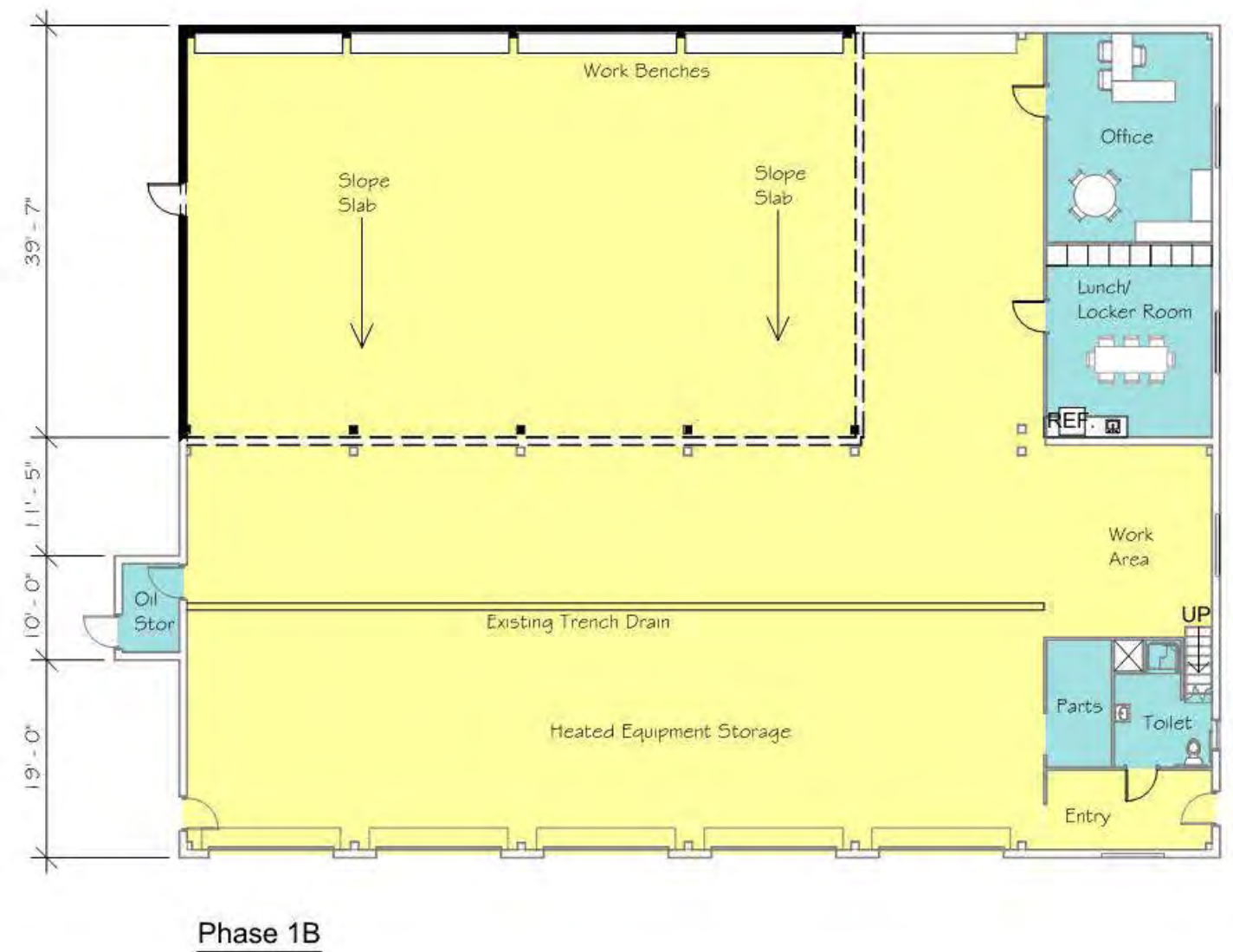
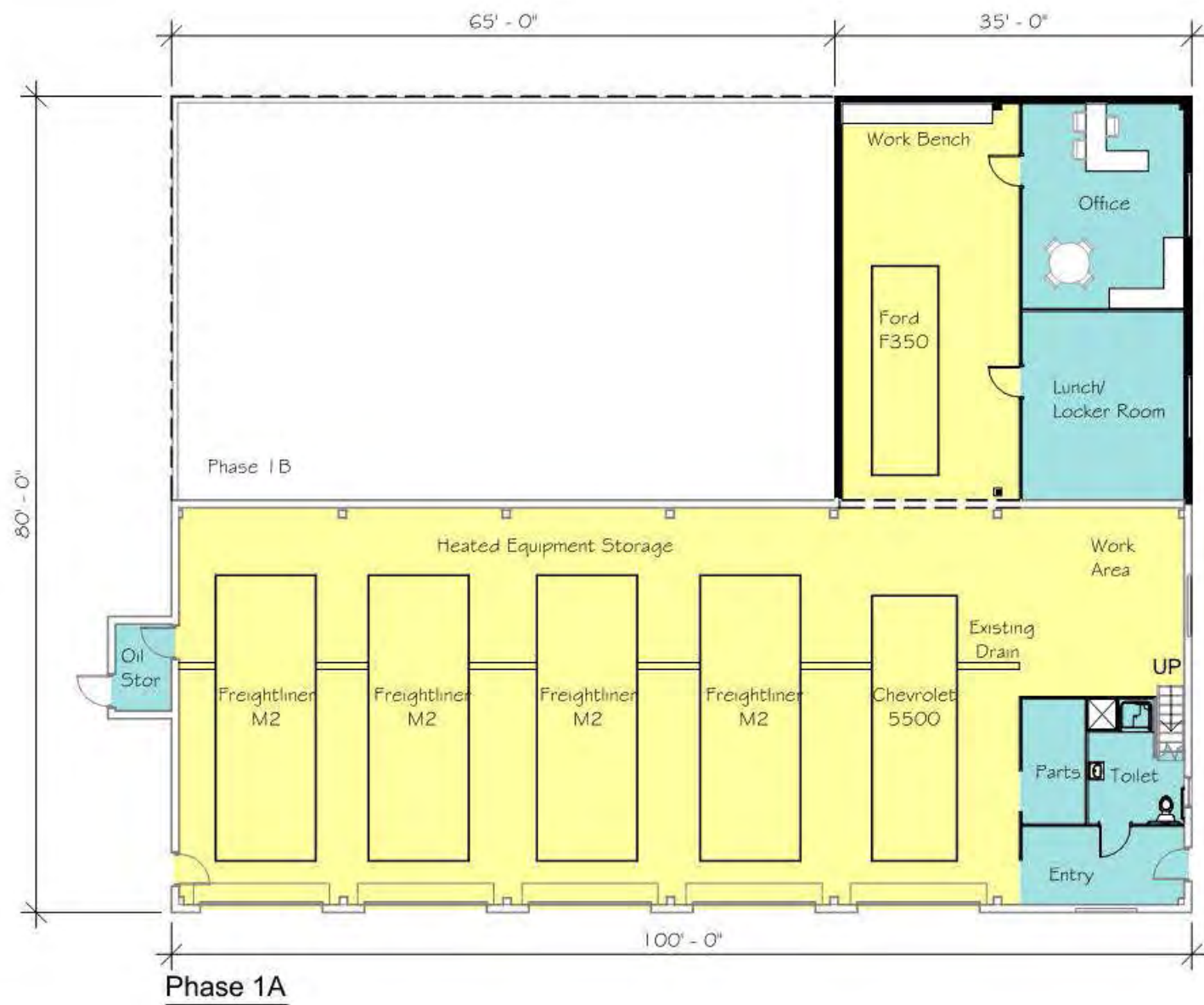


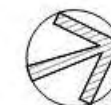
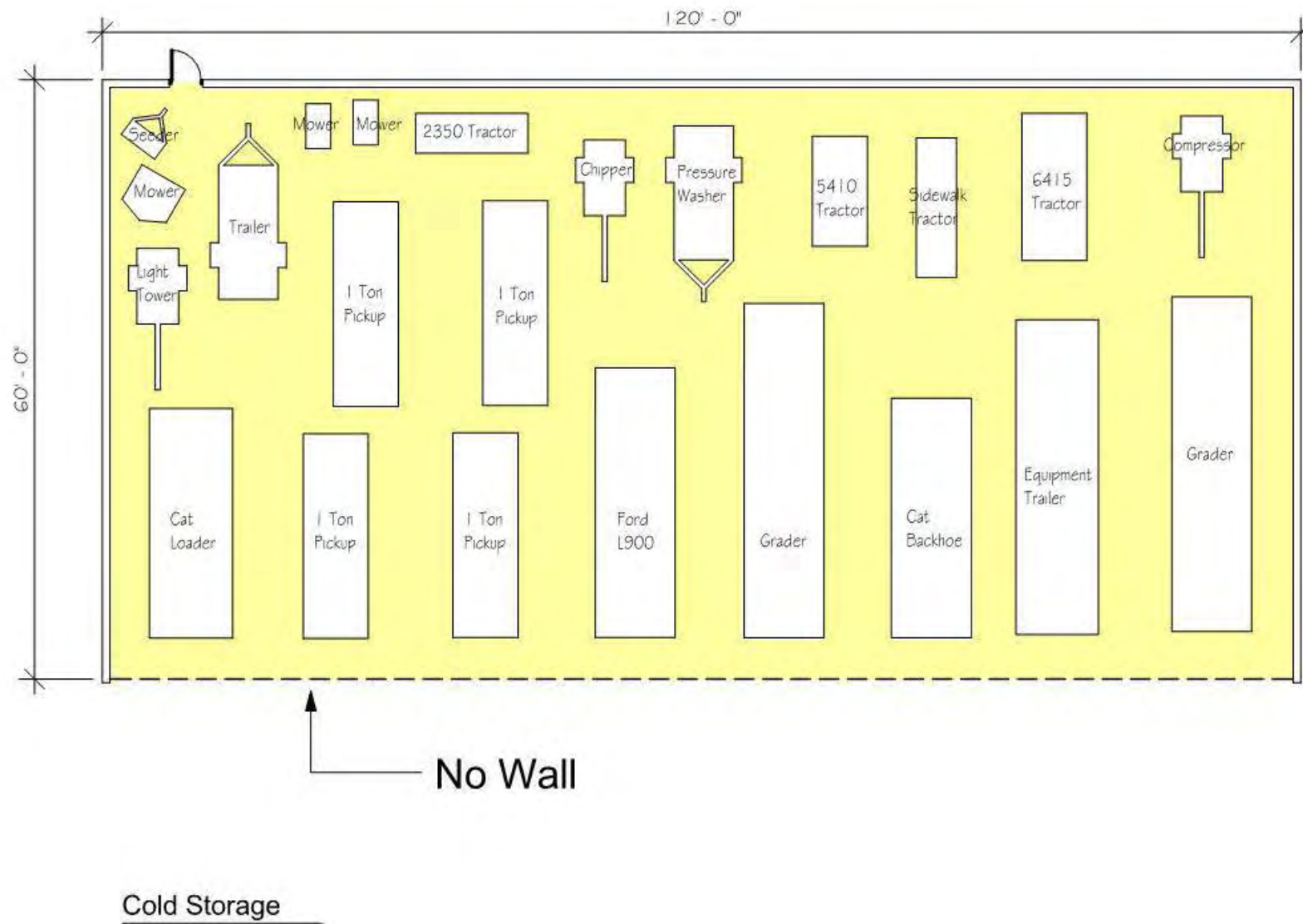
Existing

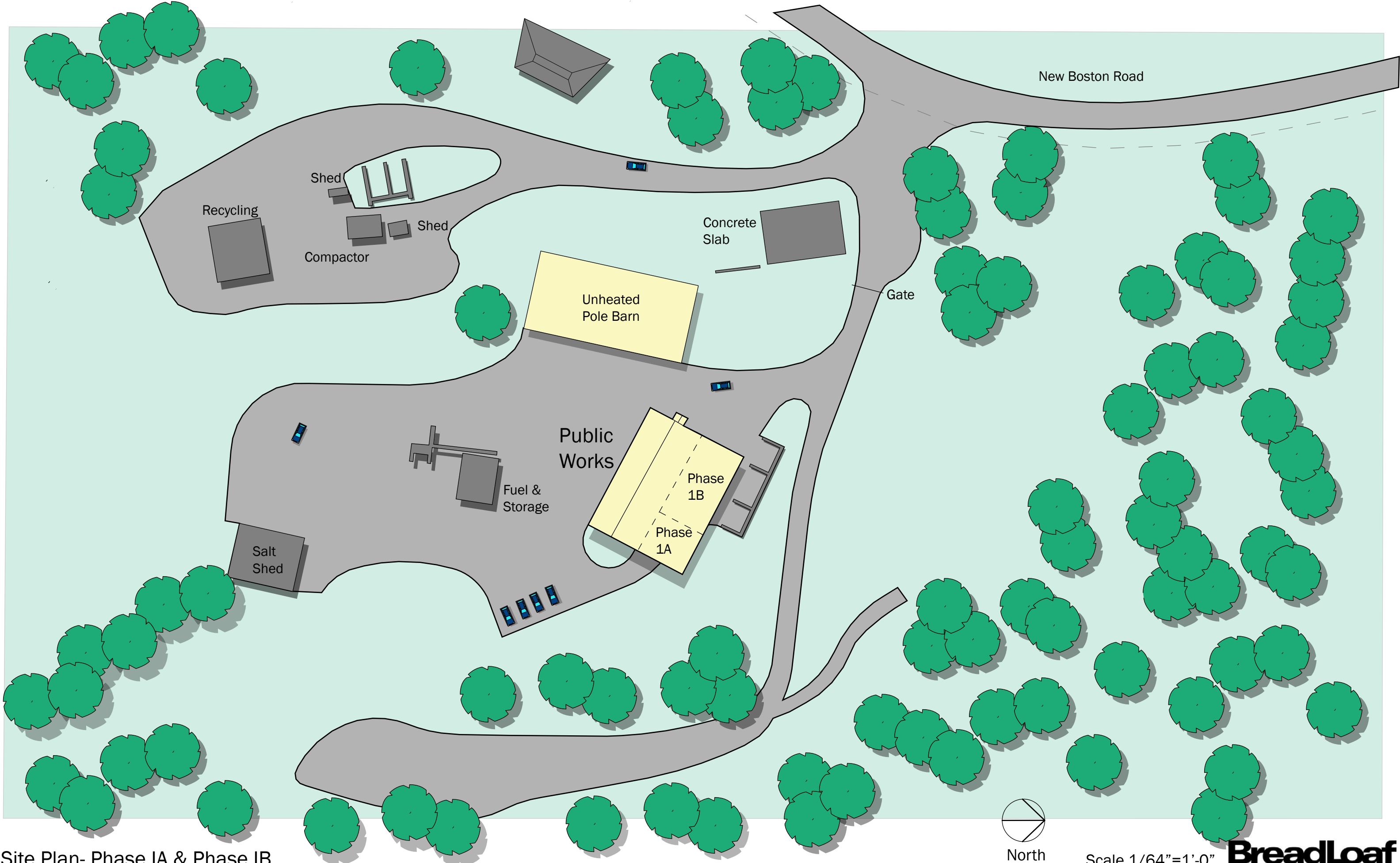


Complete Phases 1A & 1B









Site Plan- Phase IA & Phase IB
Norwich Public Works



Scale 1/64"=1'-0"
10/31/14

| Program Spaces | Existing | | Proposed | | Schematic Design 10.31.14 | | Adjacencies | Interior Floor Finishes | Notes |
|--|----------|----|----------|----|------------------------------|----|--------------------------------------|-------------------------|--|
| a. Vestibule | 0 | sf | 50 | sf | 125 | sf | other admin functions | Vinyl composition tile | |
| b. Lobby | 102 | sf | 200 | sf | 0 | sf | other admin functions | Vinyl composition tile | |
| c. Toilet | 52 | sf | 68 | sf | 106 | sf | other admin functions | Vinyl composition tile | Existing office space contains multiple funtions. |
| d. Parts | 48 | sf | 100 | sf | 77 | sf | | | |
| e. Directors Work Area | 50 | sf | 180 | sf | 323 | sf | | | |
| f. Future Assistant Office | 0 | sf | 120 | sf | 0 | sf | Other admin spaces. Apparatus floor. | VCT | To be used by 2 people. Future expansion potential? |
| g. Break Room | 65 | sf | 175 | sf | 296 | sf | other admin functions | Vinyl composition tile | |
| h. Lockers | 0 | sf | 0 | sf | 0 | sf | other admin functions | Vinyl composition tile | Contained within Corridor |
| i. Unisex Restroom | 0 | sf | 121 | sf | 0 | sf | other admin functions | Ceramic tile | Includes a shower. |
| j. Offsite Unheated Equipment Storage | 2,400 | sf | 0 | sf | 0 | sf | | | Onsite Outside Equipment Storage ~ 1,200 sf |
| k. Unheated Equipment Storage (Polie Barn) | 0 | sf | 6,557 | sf | 7036 | sf | | Sealed concrete | (3) 14'x14' OH Doors, (2) 12'x12' OH Doors, (1) B&G stall w/ 10'x10' OH Door and Storage |
| l. Heated Equipment Storage | 3,520 | sf | 4,340 | sf | 6783 | sf | | Sealed concrete | (4) 14'x14' OH Doors and work bench behind equipment |
| | | | | | | | | | Includes 2 maintenance bays, approximately 60'x17'. Requires additional space exhaust, plus vehicle exhaust collection. Includes space for spare parts, tools and a work bench. Interior wall surface should be non-combustible. |
| m. Maintenance Bays | 0 | sf | 1,406 | sf | 0 | sf | | Sealed concrete | |
| n. Mechanical Room | 0 | sf | 200 | sf | 0 | sf | | Sealed concrete | Includes electric and IT/Data. |
| o. Oil Room | 50 | sf | 150 | sf | 50 | sf | | Sealed concrete | Whole room is containment room. 55 gal drums, room to have a step down. |
| p. General Storage | 630 | sf | 300 | sf | 0 | sf | | Sealed concrete | 174 sf of storage space contained within cold storage bays. |
| | | | | | | | | | |

| | | | | | | |
|----------------------------|-------|----|--------|----|--------|----|
| Total Net Square Footage | 6,917 | sf | 13,967 | sf | 14,796 | sf |
| (net/gross %) | 0% | | 10% | | 3% | |
| TOTAL GROSS SQUARE FOOTAGE | 6,917 | sf | 15,364 | sf | 15320 | sf |

Site parking for 7employee vehicles

Town of Norwich Police, Fire and Public Works Facilities

Bread Loaf Corporation

Schematic Design Estimate

30-Oct-14

| Site Location | Phase | Site | Buildings | Total | SF | Total Construction Cost | SF Cost | 8% A/E Fees | Owner Costs | Land Acquisition Cost | Total Project Budget |
|--|---------|------------|--------------|--------------|--------|-------------------------|---------|-------------|-------------|-----------------------|----------------------|
| 1. Existing Site Option #5 Police/Fire Two-Story | Phase 1 | \$ 409,000 | \$ 1,477,000 | \$ 1,886,000 | 8,457 | \$ 1,886,000 | \$ 223 | \$ 151,000 | \$ 253,000 | NA | \$ 2,290,000 |
| 2. Existing Site Option #5 Fire Apparatus | Phase 2 | \$ 199,000 | \$ 858,000 | \$ 1,057,000 | 4,940 | \$ 1,057,000 | \$ 214 | \$ 85,000 | \$ 183,000 | NA | \$ 1,325,000 |
| 3. Public Works - Addition and Pole Barn | Phase 1 | \$ 169,000 | \$ 646,000 | \$ 815,000 | 12,627 | \$ 815,000 | \$ 65 | \$ 65,000 | \$ 127,000 | NA | \$ 1,007,000 |
| 4. Public Works Phase 2 Addition | Phase 2 | \$ 42,000 | \$ 288,000 | \$ 330,000 | 2,573 | \$ 330,000 | \$ 128 | \$ 26,000 | \$ 18,600 | NA | \$ 374,600 |

Phase 1 \$ 3,297,000

| Owner's Cost Breakdown | Option 1 | Option 2 | Option 3 | Option 4 |
|---|-----------|-----------|-----------|----------|
| Independent Testing Inspection | \$3,000 | \$3,000 | \$1,500 | \$1,000 |
| Hazardous Mat Assess/Abatement | 0 | 0 | 0 | 0 |
| Reimbursable - Printing Cost | \$3,000 | \$3,000 | \$500 | \$100 |
| Builder's Risk Insurance | \$8,000 | \$8,000 | \$2,000 | \$1,000 |
| Permitting Fees | \$10,000 | \$10,000 | \$5,000 | \$1,500 |
| Power company charges | \$3,000 | \$3,000 | \$3,000 | \$0 |
| Other Utility Charges & Fees: | \$3,000 | \$3,000 | \$3,000 | \$0 |
| Security and CCTV System | \$25,000 | \$10,000 | \$20,000 | \$0 |
| Tele System (Handsets and Hardware) | \$3,000 | \$3,000 | \$3,000 | \$0 |
| Intercom / Paging System | \$2,000 | \$2,000 | \$2,000 | \$0 |
| Data System | \$5,000 | \$5,000 | \$5,000 | \$0 |
| Audio - Visual Equipment | \$2,000 | \$2,000 | \$2,000 | \$0 |
| Furnishings-Lockers, Desks, Chairs, etc | \$25,000 | \$25,000 | \$25,000 | \$0 |
| Moving & Miscellaneous Expenses | \$5,000 | \$5,000 | \$5,000 | \$5,000 |
| Office Rental During Construction | \$0 | \$0 | \$0 | \$0 |
| Owner Contingency | \$150,000 | \$100,000 | \$50,000 | \$10,000 |
| Blasting and Rock Removal | NA | NA | NA | NA |
| Window Treatment | \$4,000 | \$0 | \$0 | \$0 |
| Interior Signage | \$2,000 | \$1,000 | \$0 | \$0 |
| Total Owner's Cost | \$253,000 | \$183,000 | \$127,000 | \$18,600 |